

2019 TROPHY AWARDS WINNERS



Lass-Oh!

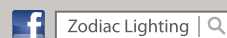
Showing off its slim cylindrical contour in combination with the miniature LED clusters hidden inside its body, Lass-Oh! collection, the variety in shape - straight lines or curved squares and rectangles - in combination with the optional shades make of Lass-Oh! a very decorative lighting solution.

 DELTALIGHT®

Zodiac
lighting philosophy

www.zodiaclighting.com

CS Hotline: 852 2893 1562



ADAPT YOUR KITCHEN DESIGN TO YOUR HOOD

The Smart Deco Hood is an innovative design piece allowing you to create your very own colour concept by mixing and matching kitchen elements. Choose from a tasteful selection of seven contemporary colours and individually combine your hood with your choice of taps and sinks.

franke.com.hk



SWISS DESIGN
Since 1911

a&d TROPHY AWARDS 2019
ARCHITECTURE | DESIGN

Professional Product Design | Kitchen Product
BEST OF CATEGORY
Franke - Smart Deco Hood



MAKE IT WONDERFUL

FRANKE



COLOURLIVING

333 lockhart road wan chai hong kong - (852) 2295 6263 - info@colourliving.com - www.colourliving.com

 facebook.com/colourliving.hk  instagram.com/colourliving.hk

CONTENTS

05

Introduction

06

Our Judges

08

Professional Architecture

28

Professional Interior Design

49

Professional Product Design

54

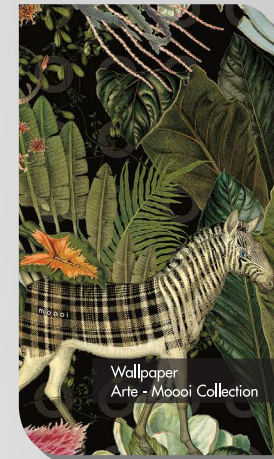
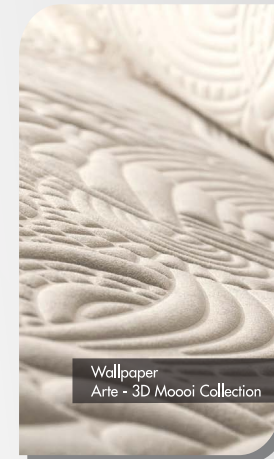
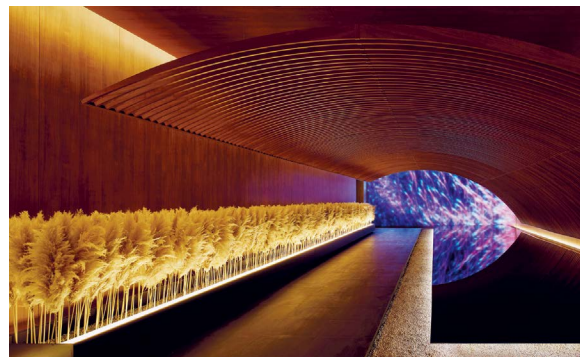
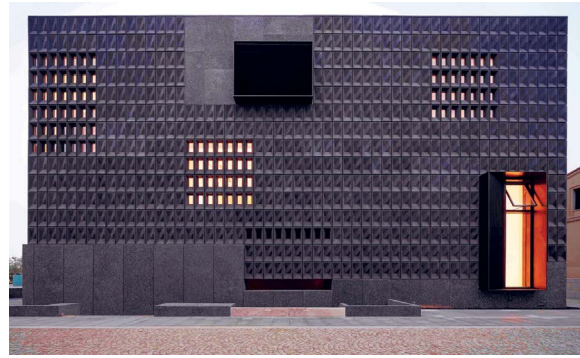
Student Architecture

57

Student Interior Design

59

Student Product Design



TAT MING WALLPAPER

達明牆紙

member of Tat Ming Group

Wallcovering • Wall Art • Sound Absorption Wallcovering • Hand-paint Wallcovering • Digital Print Wallcovering • Curtain & Upholstery Fabric • Shoji Paper/Acrylic Screen • Tatami • Rug • Vinyl Flooring • Oak Parquet • Wallcovering Adhesive



Hong Kong Showroom
16th floor, Kwan Chai Tower,
6 Tonnachy Road, Wanchai, Hong Kong
Tel : 2910 2268
Showroom business hours : Mon-Sat : 10:00 am - 6:00 pm
Sunday and public holidays: closed



Central Concept Gallery
54 Hollywood Road, Central, Hong Kong
Tel : 2735 6337
Showroom business hours : Mon-Sun : 10:30 am - 7:00 pm



Shatin Showroom
Shop 343, Level 3, HomeSquare,
138 Shatin Rural Committee Road, Shatin, NT
Tel : 2412 0337
Showroom business hours : Mon-Sun : 11:00 am - 9:00 pm

Diamond Sponsor



COLOURLIVING is a lifestyle-driven group, the first-of-its-kind in Asia. Embedded in our corporate philosophy is the commitment to bring individuality, well-being and a tasteful lifestyle into our clients' living spaces through best-in-class services and a platform of international brands.

Gold Sponsor



BACHMANN is a leading innovative solution provider for installation systems, power management, energy efficiency and system security. It creates the best connections for energy and data transmission required by modern environments.

Gold Sponsor



DRAGON offers an extensive range of metal products for ceiling, cladding and custom project solution, coupled with second-to-none service levels.

Supporting Sponsor



Based in Schiltach in Southern Germany, the Hansgrohe Group, with its brands AXOR and hansgrohe, enjoys a reputation as a leader in innovation, design and quality within the bath and kitchen industry.

International Media Partners



China - Designer.com
中国建筑与室内设计网



Presented by



Editorial

Managing Editor
Dennis Lee
Assistant Editor
Kate Lok

Design & Production

Senior Graphic Designer
Shadow Ng

Management

Executive Directors
Peter Jeffery
Cordelia Chan
Business Director
Graham Cheung

Sales & Marketing

Associate Publisher
Tony R. Chow
Advertising Managers
Colin Shum
Icy Cheung
Marketing Director
Rosa Chow
Marketing Manager
Quincy Luk
Marketing Executive
Chloe Yiu

Finance & Administration

Finance & Administration
Director
Loesa Lee
Finance & Administration
Executive
Catherine Chan

Go to perspectiveglobal.com to click & connect!



Perspective Limited

Unit B, 1/F Cheung Wah Industrial Building, 10-12 Shipyard Lane
Quarry Bay, Hong Kong
Tel: +852 2525 0287
Fax: +852 2526 3860
Email: info@perspectiveglobal.com
perspectiveglobal.com

ISSN 1680-9939

Enquiries

Editorial
Email: editorial@perspectiveglobal.com

Advertising

Email: advertising@perspectiveglobal.com

Subscription

Email: subscription@perspectiveglobal.com

Colour separation and printing by
Ocean Design & Printing Co Ltd
Flat A, 5/F, Shell Industrial Building, 12 Lee Chung Street, Chai Wan, HK
Tel: +852 2560 2299

RIGHTS & PERMISSIONS

Those submitting manuscripts, photographs, artwork or other materials to Perspective Limited for consideration should not send originals unless specifically requested to do so in writing by Perspective. Unsolicited manuscripts, photographs, and other graphics must include a self-addressed return envelope with prepaid postage if material is to be returned to sender. However, Perspective is not responsible for unsolicited submissions. Editorial office is located at Unit B, 1/F Cheung Wah Industrial Building, 10-12 Shipyard Lane, Quarry Bay, Hong Kong

Reproduction in whole or in part without written permission is strictly prohibited. For permission, please write to the Publisher c/o the above editorial address.

DISCLAIMER

Published by Perspective Limited. Although every reasonable care has been taken to ensure the accuracy of the information contained in this publication, neither the publishers, editors nor their employees and agents can be held liable for any errors, inaccuracies and/or omissions, howsoever caused. Perspective Limited shall not be liable for any actions taken based on the views expressed, or information provided with this publication. Always seek your own professional advice from the appropriate adviser, professional or institution. Copyright © Nov 2019 Perspective Limited

Future proof

Perspective's A&D Trophy Awards set to cement the status of Asia's premier awards



Fifteen years ago, the A&D Trophy Awards were founded to recognise inspiring design and aspiring creatives in architecture and design in the Asia-Pacific. Last year we expanded the scope with the first A&D China Awards, encompassing the finest design in the Greater China region.

This year we celebrate with a few firsts: the A&D Trophy Awards will be joined by our China Awards for an even bigger award presentation in Hong Kong; secondly, the 'Best of the Best' awards, the highest honours of the awards ceremony, are renamed as 'Titanium' awards that spotlight the esteemed status of the awardees; and lastly, we are introducing a new coveted award, Best Architecture and Design Practice of the Year, to acknowledge the firm that has won most awards this year.

While we congratulate winning designers from Ronald Lu & Partners, Aedas, Neri&Hu to One Plus Partnership, Matrix Design, LW and M Moser Associates who

continued the set new standards for design excellence, we are thrilled to see newcomers and independent studios such as OPENUU and Atelier Tao+C breaking into the scene. They are among this year's proud winners who are poised to drive the design and architecture industries to new heights.

We are also grateful for our wealth of distinguished judges from Hong Kong and overseas and thank them for the hours spent reviewing hundreds of projects. Lastly, we would like to thank everyone who participated in the competition this year, the sponsors who have faith in us, the guests and friends who came to support our event at this difficult time in Hong Kong. 2020 will definitely be better for *Perspective* and Hong Kong.

Dennis Lee
Managing Editor

THANK YOU TO ALL OUR JUDGES

PROFESSIONAL ARCHITECTURE



Dara Huang

Founder
Design Haus Liberty, London & Hong Kong

Huang started her company in London and Hong Kong after working for Herzog & de Meuron and Foster + Partners. She is regularly invited as a speaker to design events around the globe.



Piero Lissoni

Co-founder
Lissoni Associati/Graph.x/Lissoni Architettura/Lissoni Inc, Milan

Lissoni's studios develop architecture, interiors, design and graphic projects including villas, residential, offices, factories, theatres, hospitality and hotels, yachts and retail. Lissoni is also art director for many well-known furniture brands.



William Lim

Founder and managing director
CL3 Architects, Hong Kong

Lim graduated from Cornell University and CL3 studio's diverse, award-winning global portfolio includes architectural and interior projects for hotels, restaurants, retail, corporate, residences and art installation design.



Heidar Sadeki

Creative director & co-founder
Richardson Sadeki, New York

Richardson Sadeki, an internationally acclaimed design studio with offices in New York, Los Angeles and Hong Kong, focuses on high-end residential and hospitality projects, and encompasses architecture, interiors, furniture and branding.



Song Zhaoqing

Founder & chief architect
Lacime Architects, Shanghai

With degrees in architecture from Xi'an and Tsinghua universities, Song's work combines advanced design with local characteristics. Lacime Architects' notable projects include the Qin II Dynasty Relics Museum, Xi'an.

PROFESSIONAL INTERIOR DESIGN



Alan Chan

Designer, brand consultant and artist / founder
Alan Chan Design Company, Hong Kong

Chan and his company have won more than 600 advertising and design awards, and his philosophy of 'Oriental passion/Western harmony' has influenced young designers. Chan's art works have been widely exhibited.



Kinney Chan

Founder
Kinney Chan and Associates, Hong Kong

Kinney Chan and Associates offers interior design and project management across multiple industries, including hospitality, residential, commercial and corporate. A multiple award winner, he strives for creativity and originality.



Teo Su Seam

Partner
LTW Designworks, Singapore

Before joining LTW in Singapore, Teo studied and worked in the US. She is experienced in luxury hotel projects. And has worked on commissions for major hotel groups throughout Asia.



Tara Bernerd

Founder
Tara Bernerd & Partners, London

Based in Belgravia, Bernerd works on global projects and believes that, while each project is unique, its signature style is approachable luxury with an industrial edge that results in timeless elegance.

PROFESSIONAL PRODUCT DESIGN



Ben McCarthy

Head of industrial design
Michael Young Studio, Hong Kong

Originally from Sydney, McCarthy oversees many of the studio's factory-focused projects as they progress from hand sketches to producible forms. He has coordinated several award-winning projects that originated in Hong Kong.



Johan Persson

Founder
C'monde Studios, Hong Kong

Persson is a Swedish native with a 20-year record of brand and design management. He came to Hong Kong in 2004. His brand and industrial design consultancy is strategy- and research-driven, operating at the intersection of business, brand and design.



Mario Trimarchi

Designer & founder
Fragile Studio, Milan

Milan-based Trimarchi founded Fragile as a corporate identity studio but continues to design, research and teach. His objects hover between unstable geometries and sculpture, often accompanied by drawings and stories.



Michael Young

Director & founder
Michael Young Studio, Hong Kong

Young's Hong Kong-based studio creates modern design employing Asian technological ingenuity. The studio has produced award-winning products that last a lifetime for clients and is represented in museums globally.

STUDENT ARCHITECTURE



Jason Hilgefort

Co-founder
Land+Civilization Compositions, Hong Kong

An urbanist, architect and teacher, Hilgefort founded Land+Civilization Compositions, a Rotterdam- and Hong Kong-based studio that explores issues of the ever-expanding edge of urbanism and views city creation as an art forum.



Matthew Potter

Director
WilkinsonEyre (APAC), Hong Kong

Having worked in the UK, Singapore and Hong Kong, Potter leads WilkinsonEyre Asia Pacific projects. He played a key role in the complex geometries of the Guangzhou International Finance Centre.



Marisa Yiu

Executive director/co-founder
Design Trust/ Eskyiu Studio, Hong Kong

Yiu is an architect and has taught in the UK and Hong Kong. The Design Trust aims to elevate the role of design in Hong Kong and the Greater Pearl River Delta region. Hong Kong

STUDENT INTERIOR DESIGN



Enoch Hui

Founder
Atelier E, Hong Kong

Hui practised architecture and interior design in both the UK and Hong Kong and believes that clients should experience joy in his designs that are a symphony of sequential and intertwining spaces.



Kelvin Kong

Founding partner & director
PARTI, Hong Kong

Kong studied in the US and worked at Foster + Partners in London and then joined BC&A in Hong Kong where he developed his interior design expertise.



Regina Kwok

Creative director
Artwill Interior Design House, Hong Kong

With 18 years of interior design experience, Kwok specialises in design solutions for residences that integrate aesthetics with practicality with a keen interest in employing environmentally friendly materials.

STUDENT PRODUCT DESIGN



Clifton Leung

Founder
Clifton Leung Design Workshop, Hong Kong

Leung believes his unique and timeless designs feature aesthetic quality, functional effectiveness and environmental friendliness. He has worked across hospitality, retail, healthcare centres, residential and public spaces.



Elaine Ng

Founder
Fabrick Lab, Hong Kong

The Fabrick Lab aims to keep traditional Chinese craft and technique alive. Ng investigated how design could utilise Chinese craft, expanding potential markets and creating a sustainable income for rural villages.



William Wayne Lau

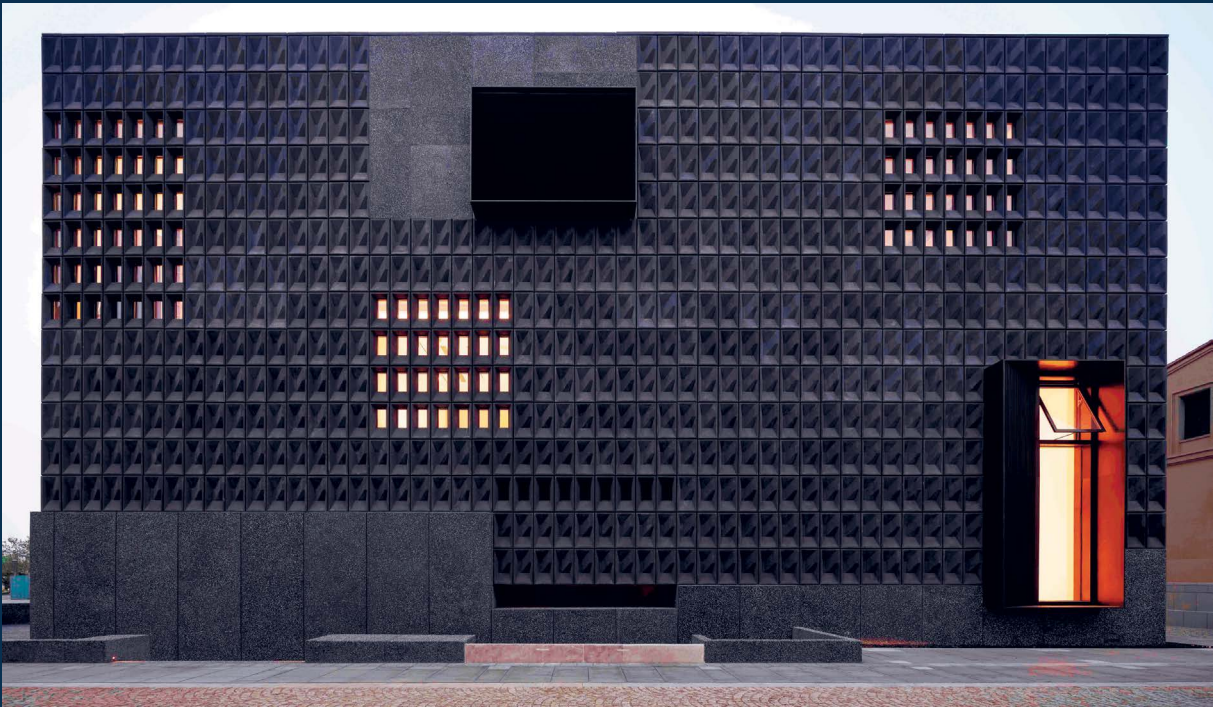
Executive director
B.S.C. Group, Hong Kong

Kitchen, bathroom and building materials supplier B.S.C. Group was founded in 1970, and it now caters to hotels, developers and shoppers, with its concept store colourliving carrying major international brands.



TITANIUM AWARD

Professional Architecture | Public Space
BEST OF CATEGORY



COMPANY: Neri&Hu Design and Research Office
PROJECT: Aranya Art Center
LOCATION: Qinhuangdao, China

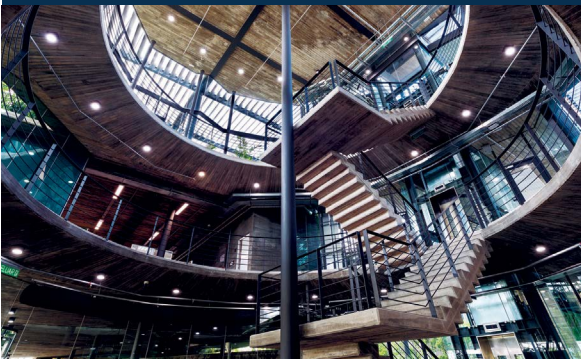
Drawing inspiration from the waters nearby – azure and calm in summer, splintered ice in winter – the building attempts to encapsulate the natural wonder of water at its core. The arts centre at a seaside resort maximises its footprint and appears to have a thick, solid mass, but has an open cone at its centre with a stepped amphitheatre courtyard at the base. The central void space can be reconfigured and used in many ways: as a water feature but also a performance and gathering place when drained.

Within the building is a series of interlocking gallery spaces that leads visitors upwards. Composed of various textured concretes, with and without aggregate, the facade is rock-like and heavy. Smooth surfaces reflect the changing skies, while moulded modular units pick up on the play of shadows. Bronze elements act as accents to catch light and draw attention to the entry of each gallery. Custom lighting and details add intricacy to the modest palette.

See page 22 for other Public Space category winners



Professional Architecture | Commercial, Retail & Office
BEST OF CATEGORY

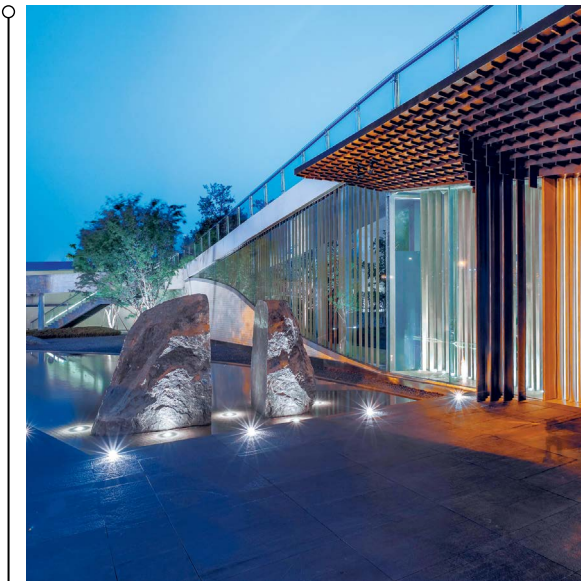


COMPANY: Design Unit
PROJECT: Factory in the Forest
LOCATION: Penang, Malaysia

The client requested an energy-efficient and climatically responsive building, so environmental principles and sustainability were integral to the design process: energy and water efficiency, day light and biophilia – the need to connect with nature.

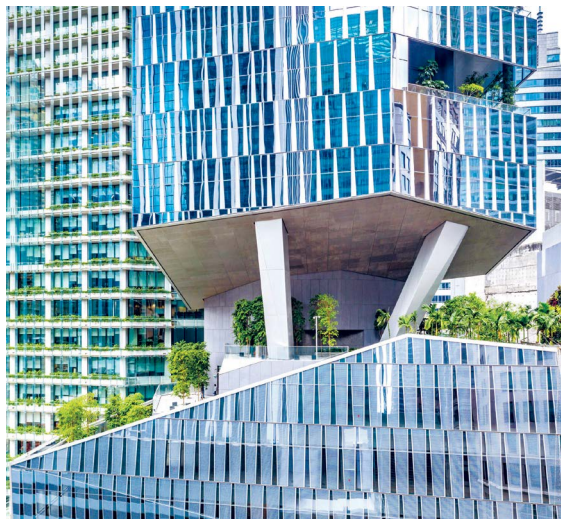
The plan for the 15,000sqm (162,000sqf) electronics manufacturing plant, which won an architectural competition, imagined a forest that penetrates, surrounds and steps over the building to create maximum contact with nature – plants, breezes, scents, sounds and touch.

Professional Architecture Design | Commercial, Retail & Office
EXCELLENCE



COMPANY: Atelier Alter
PROJECT: WuliEpoch Culture Center
LOCATION: Beijing, China

This sales centre integrates office functions with urban cultural and leisure spaces, including skating rinks and performance and education areas. Aligned along three axes, the design stacks criss-crossed layers of curved walls to create courtyards and intermediate spaces, and a spiral ramp leads visitors upwards, providing views of the facilities and the surroundings.



COMPANY: KPF
PROJECT: Robinson Tower
LOCATION: Singapore

Making the most of its prominent wedge-shaped site, Robinson Tower is vertically separated from its podium creating a stepped terrace garden in Singapore, the 'city in a garden'. The crystalline tower maximises natural light and the open floorplan has the core offset to the west to minimise solar-heat gain.



COMPANY: KTX archiLAB
PROJECT: Cloud of Luster Chapel
LOCATION: Himeji, Japan

The all-white cloud-shaped wedding chapel with flaring columns is encased in curved glass walls, floating above a pool of water. The organic shapes have no hard angles and to maintain the space's simplicity, all machinery and equipment, including lighting and air-conditioning, has been placed below the floor.



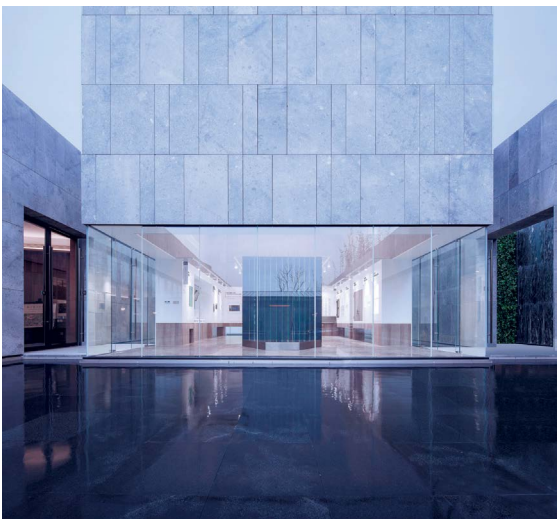
COMPANY: Ronald Lu & Partners
PROJECT: Integral (Phase 1A)
LOCATION: Guilin, China

Adjacent to Guilin's famous karst landscape, this project combines farming, manufacturing and tourism. A garment factory has been confined to a manufacturing zone next to a related tourist and exhibition zone. The transparent buildings are integrated into the landscape using local materials and with rooflines reflecting vernacular architecture.



COMPANY: Shanghai PTArchitects
PROJECT: Glorious Bay
LOCATION: Suzhou, China

This double-storey sales centre is integrated into the landscape and has views of Taihu Lake through the glass walls of the ground-floor reception and function spaces. The first floor has a feature pool, while glass and stainless-steel pendants hang above the facade, creating a 'rain curtain'.



COMPANY: Shuishi
PROJECT: CIFI Tianning Park Mansion
LOCATION: Changzhou, China

The CIFI sales centre is inspired by Jiangnan-style houses and their patios and gardens: customers move through the centre's linked function areas after entering a bamboo grove. The design allows the centre to be later transformed into a community cultural exhibition space or small art gallery.



COMPANY: UNStudio
PROJECT: Lane 189
LOCATION: Shanghai, China

Lane 189 combines retail, restaurants, office and public spaces to create a lifestyle destination that infuses elements of old Shanghai within a vertical public square and city centre. Large and small hexagonal components form an envelope on the curved facade, while the interior has a central void.

Professional Architecture | Green and Sustainable Build
BEST OF CATEGORY

COMPANY: Neri&Hu Design and Research Office
PROJECT: Junshan Culture Center
LOCATION: Beijing, China

This three-storey golf clubhouse combined with a sales office rises out of the water with a veil of bamboo that softens the brick facade. Traditional northern Chinese architecture is merged with contemporary design as functional spaces blend with courtyards and gardens to blur boundaries between inside and out. In places the exterior screen connects with interior spaces, creating a facade that is different from every angle. Traditional gold brick tiles form the foundation of the building mass, while brick and wood panels are the primary backdrop for the interior. A sculpted ceiling is used throughout the interior.



Professional Architecture | Hotel & Resort
BEST OF CATEGORY

COMPANY: Studio Qi
PROJECT: Songtsam Lodge Laigu – Tibet
LOCATION: Tibet Autonomous Region, China

Modular prefabrication was used to solve challenging construction, transport, environmental and cultural issues for this 20-guest-room lodge at 4,200 metres overlooking a glacier. Sited near one of the oldest villages in the Himalayas, the building is hidden from sight by a high cliff with the entry blended into the surroundings. The altitude meant that much of the construction could not be done on-site. The foundations and stone walls were built first, after which 43 modules made in Shanghai – including diffused oxygen systems, electrical floor-heating systems and low-E triple-glazed full-height windows – were put in place.



Professional Architecture | Green and Sustainable Build
EXCELLENCE



COMPANY: Zhubo Design
PROJECT: Green Cloud
LOCATION: Shenzhen, China

On the previously unused roof of a 1980s block of flats, a gridded and stepped framework containing planter boxes connects levels and creates a shaded pavilion. This ‘urban mountain’ acts as a catchment for rainwater for plants and also facilitates social interaction in cities that have encroached on villages.

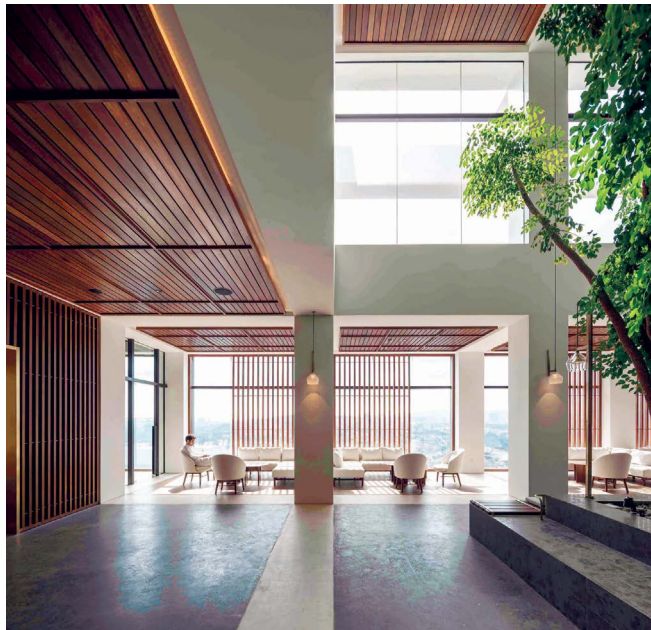
Professional Architecture | Hotel & Resort
EXCELLENCE



COMPANY: KPF
PROJECT: Rosewood Bangkok
LOCATION: Bangkok, Thailand

The traditional Thai greeting of two hands pressed together inspired the two tapering and connected high-rise structures and central opening with terraced gardens. An innovative structural solution using diagonal columns on the inclined facade minimises structural transfers and member sizes while improving space in the guest rooms.

Professional Architecture | Hotel & Resort
EXCELLENCE



COMPANY: Neri&Hu Design and Research Office
PROJECT: Alila Bangsar
LOCATION: Kuala Lumpur, Malaysia

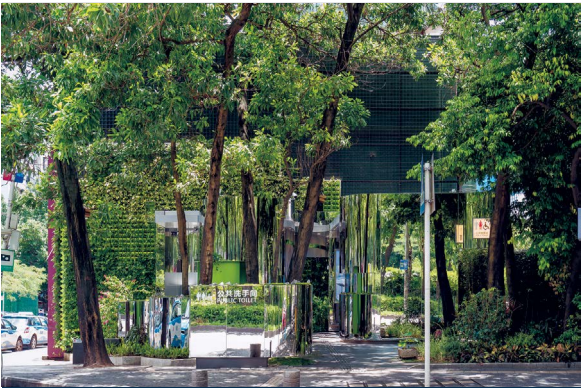
The 'urban oasis' hotel occupies the ground floor and the top eight floors of a new tower, with five levels of guest rooms and three levels of public areas, with Neri&Hu responsible for both architecture and interior design. A rigid structural grid defines the project from outside to inside.

COMPANY: Studio Qi
PROJECT: Stray Bird at Yellow River
LOCATION: Ningxia Hui Autonomous Region, China

An environmentally friendly solution was required for this resort near the Yellow River in the Tengger Desert. Prefabricated steel-framed cabins with glass walls on three sides and sophisticated interior details and finishes ensured a high quality of construction in such a remote location. The decks maximise views.



Professional Architecture | Infrastructure
BEST OF CATEGORY



COMPANY: Zhubo Design
PROJECT: No-Boundary Toilet
LOCATION: Shenzhen, China

Some 500 people a day use this unisex toilet in Shenzhen, whose highly polished stainless-steel exterior reflects the grove of trees in which it is situated, blurring the construction into the site. It comprises three gender-neutral compartments – an accessible bathroom, a children's outdoor toilet and administrator room. Networking and big data assists in the maintenance and management of the building, gathering information for behaviour analysis and facial recognition. Users can get information about air quality, temperature and humidity by scanning a QR code in the toilet.

Professional Architecture | Institution
BEST OF CATEGORY

COMPANY: Ronald Lu & Partners
PROJECT: Xiqu Centre
LOCATION: Tsim Sha Tsui, Hong Kong

The first performing arts venue in the West Kowloon Cultural District, the Xiqu Centre is dedicated to Chinese opera and the design required in-depth study of the art form and its practices to embody the theatre, Chinese culture and public space. The seven-storey centre houses a Grand Theatre, a Tea House Theatre for more intimate performances, eight professional studios and a seminar hall. The building's design is inspired by traditional Chinese lanterns and blends traditional and contemporary elements, including a moon-gate motif, courtyard and the curvilinear facade, which re-imagines theatre drapes and the folds of the performers' costumes.



Professional Architecture | Institution
EXCELLENCE



COMPANY: Henning Larsen Architects Hong Kong
PROJECT: French International School, Hong Kong
LOCATION: Tseung Kwan O, Hong Kong

This new campus uses planting and floral elements throughout. The multi-coloured facade employs sun breakers to diffuse light and reduce solar-heat gain and air-conditioning. Windows on the north and south sides maximise natural light, while bamboo panels line ceilings, natural cork is used on floors and recycled rubber in outdoor play areas.



COMPANY: LYCS Architecture
PROJECT: Hangzhou Haishu School of Future Sci-Tech City
LOCATION: Hangzhou, China

Inspired by a child's drawing, the kindergarten and a primary school comprises 15 gabled buildings scaled to students' development needs. This school has 27 classrooms while the kindergarten has 12 rooms. A comfortable campus environment is formed by small inner courtyards between the buildings with stairways and corridors forming activity spaces.



COMPANY: Ronald Lu & Partners
PROJECT: Chai Wan Campus for the Technological and Higher Education Institute of Hong Kong
LOCATION: Chai Wan, Hong Kong

The twin-block design integrates the campus with the community and the design's environmental responsiveness incorporates views, daylight, natural ventilation, and micro-climate into its eco-efficiency. Over 35 percent aggregate greenery coverage was achieved through sky-rise greening. The full-width ribbon windows maximise daylight and views, and traffic noise is deflected by acoustic fins.



COMPANY: The Architectural Design & Research Institute of Zhejiang University
PROJECT: Kaihua County 1101 Project and Urban Archives
LOCATION: Zhangzhou, China

This multi-function building comprises several layers on different axes that are stepped and cantilevered to follow the contours of an adjacent hill. The simple forms, each housing separate activities, create a three-layer box with a grey-and-white palette, and extensive windows that frame views.

Professional Architecture | Landscape
BEST OF CATEGORY

COMPANY: Antao
PROJECT: Laurel Oriental, Vanke
LOCATION: Hangzhou, China

Although incorporating Jiangnan traditional culture, Laurel Oriental breaks conventional Chinese courtyard styles and adopts abstract minimalist modernism in a series of enclosures, using a restricted palette of materials and colours. In one, still water is surrounded by fine black sand with a single Chinese hackberry planted on the white rocks, evoking Chinese landscape paintings. In another, tiers of steps refer to a famous scenic spot in nearby West Lake; while another pays tribute to Longjing tea. Restrained geometric forms, white walls, grey tiles, black sand and green foliage create a sense of calm seclusion.

Professional Architecture | Landscape
EXCELLENCE



COMPANY: eLandscape
PROJECT: Four Square Park
LOCATION: Shenzhen, China

'The Eye of Bao'an', represented by a loop, is the major design concept of this 4.3ha park split into four parcels by a major crossroad. The loop integrates the parcels, which are themed into four subjects: culture, innovation, lifestyle and art. The park preserves the trees that survived a typhoon in 2018.

Professional Architecture | Landscape
EXCELLENCE



COMPANY: **Eravolution**
PROJECT: **With the Flow**
LOCATION: **Waterfall Bay Park, Hong Kong**

The installation With the Flow was part of a Government-sponsored project 'City Dress Up: Seats Together' and is made up of a low sinuous bench and a number of ellipsoids with a satin surface placed so they would not disturb tree roots. New turf and pebbles cover previously bare soil.



COMPANY: **Locus Associates**
PROJECT: **Sanya Vanke Wetland Park: Abandoned Barren to Public Oasis**
LOCATION: **Sanya, China**

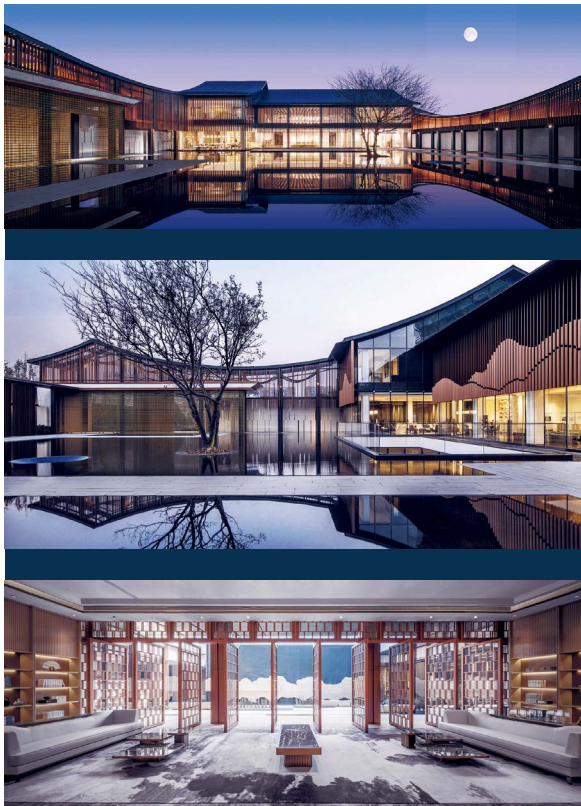
A retention lake that acts as a bio-filter became the central element of the rehabilitation of a degraded valley. Original landforms and elements of the ecology were enhanced with extensive planting to help manage floods and improve water quality. New walkways and bridges, ramps and terraces link to adjacent developments.



COMPANY: **Shanghai Lacime Design**
PROJECT: **China Resources City Next Landscape**
LOCATION: **Ningbo, China**

The design of this demonstration area for a high-rise building to be constructed above a subway focuses on moving people through a series of spaces, using a path to extend the sense of the outdoors. An entrance corridor and large stepping stones direct visitors through courtyards with pools.

Professional Architecture | Mixed-use
BEST OF CATEGORY



COMPANY: **Shanghai PTArchitects**
PROJECT: **Jiangnan Courtyard**
LOCATION: **Hangzhou, China**

This sales centre design draws on traditional Jiangnan courtyards and Western modernism. The building is surrounded by water – an island in a busy urban setting. The swooping roofline of the building is reminiscent of mountains. Grilles strengthen the connection between the inside and outside, offering visitors view of the water and veranda ahead and maintaining the transparency. The project features meticulous detailing and has a material palette of ultra-clear glass, black zinc-titanium panels, metal panels (used on the roof), and faux-wood grilles.

Professional Architecture | Mixed-use
EXCELLENCE



COMPANY: **Shanghai Hope Architectural Design**
PROJECT: **Leader Mountain Art Museum**
LOCATION: **Zhongshan, China**

The design incorporates elements of Lingnan culture with a minimalist architectural approach for an elegant neo-Chinese style that highlights continuous and flowing spaces. Functional areas provide optimal space for exhibitions, receptions and offices. The simple design features U-shaped glass to make the entire building look like a crystal glass box.

Professional Architecture | Mixed-use
EXCELLENCE



COMPANY: Shanghai PTArchitects
PROJECT: Gemdale • Metropolis Light
LOCATION: Jinhua, China

The repeated arches of the facade, reminiscent of both classical and contemporary Western architecture, provide extensive display space for the sales and exhibition centre that will later be turned into an integrated commercial square. The facade texture changes with aluminium plates on the second level.



COMPANY: Shanghai PTArchitects
PROJECT: Oriental Mansion
LOCATION: Kunming, China

The architecture of this sales centre draws on the seal-like layout of traditional Yunnan dwellings and several courtyards linked by corridors. The pitched roofs of different heights are covered with small Chinese-style grey tiles and generate a sense of rhythm, recalling the local hills.



COMPANY: Shanghai PTArchitects
PROJECT: Tan Courtyard
LOCATION: Shaoxing, China

Houses of different sizes with sloping roofs (traditional in Shaoxing) of varying heights, combined with glass curtain walls, doors and vestibules together form a series of courtyards. The roofs with varied slopes have small overhanging eaves and construction is with simple stone materials and wooden grates.



COMPANY: UNStudio
PROJECT: Raffles City Hangzhou
LOCATION: Hangzhou, China

A 'city within a city', two streamlined towers atop a podium and plaza house retail, commercial and residential sectors. Clad in a scale-like aluminium tiles, the towers have an outer layer of rotating, vertical solar-shading fins. It is the first retail mall in China to use large-scale natural ventilation and has a LEED Gold sustainability certificate.

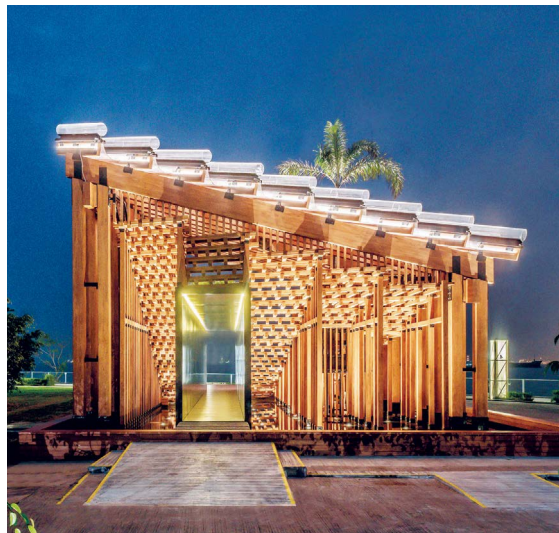
Professional Architecture | Pop-up
BEST OF CATEGORY



COMPANY: Neri&Hu Design and Research Office
PROJECT: Stockholm Furniture & Light Fair
Guest of Honour Exhibition – The Unfolding Village
LOCATION: Stockholm, Sweden

Concerned by the disappearance of villages and village culture, Neri&Hu created an exhibition that represents and captures the essence of the traditional Chinese village. Inspired by the alleyways and street life of clan-based villages, the exhibition layout is that of a sinuous or continuous alleyway that folds and unfolds to create lanes and slowly revealed layers of spaces. The profile and form takes on the reading of an abstracted pitched roof that symbolises the home and, when repeated in connected rows, forms a 'village'. The device of the alley creates a quirky tableau for the display of objects.

Professional Architecture | Pop-up
EXCELLENCE



COMPANY: New Office Works
PROJECT: West Kowloon Pavilion
LOCATION: West Kowloon Cultural District, Hong Kong

The winning entry of the inaugural Hong Kong Young Architects & Designers Competition, the pavilion transplants everyday urban and architectural elements from the city to the park. A large sloped roof is supported by a series of timber columns – rarely used in Hong Kong – that increase in scale.



COMPANY: Andrew Bromberg at Aedas
PROJECT: Hong Kong West Kowloon Station
LOCATION: West Kowloon, Hong Kong

At the heart of the station is the enormous 20-metre-below-ground central void that allows light and views at all levels. Environmentally sustainable, the station uses passive energy, with cool air sinking to its lower levels. The people-centric and inclusive design incorporates parks on multiple levels, including the station's rooftop.



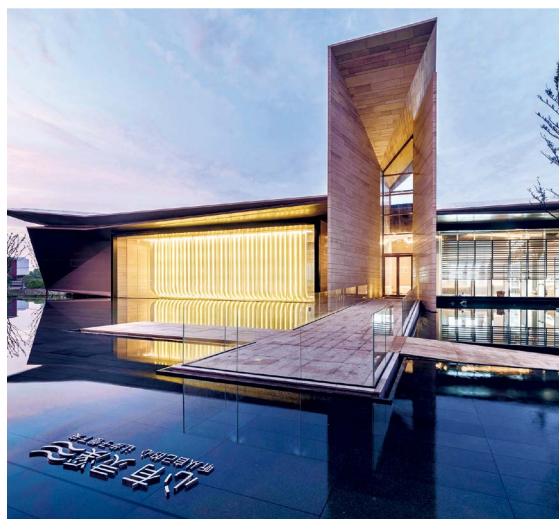
COMPANY: DC Alliance
PROJECT: Haier Global Creative Research Centre
LOCATION: Qingdao, China

The landscape inspiration for this multi-functional building is seen on the undulating roof, which is contoured with terraces and open to the public. Organised around a central courtyard, it houses an auditorium, theatre, library and exhibition spaces. Machinery and operating equipment is sited under a double-layer roof.



COMPANY: Interval Architects
PROJECT: Tower of Bricks
LOCATION: Hengshui, China

On the site of an abandoned brick kiln, this botanical art gallery next to a restored wetland park uses bricks as its main material, stacked in patterns to allow light to penetrate. An observation tower references a chimney and a series of vaulted arches and a central courtyard relate to the former kiln.



COMPANY: Kris Lin International Design
PROJECT: Light Waterfall
LOCATION: Wuhan, China

A large pool at the front makes the sales centre seem to float and a walkway leads through a slim 16-metre-high stone entrance tower. On the facade, a 'water curtain' composed of LED lights reinforces the water theme. The sales exhibition building will be later handed to the government for an art space.



COMPANY: Ronald Lu & Partners
PROJECT: Tsim Sha Tsui Waterfront Revitalisation
LOCATION: Tsim Sha Tsui, Hong Kong

The revitalisation of the Avenue of Stars and Salisbury Garden improved pedestrian circulation and opened views of the harbour. It employed an innovative and eco-friendly design that incorporated upgraded and expanded seating, a central lawn, extensive planting and shading, works of art, lavatories and a kiosk.



COMPANY: Shuishi
PROJECT: Exhibition Centre of Shimao Shenzhen-Hong Kong International Center
LOCATION: Shenzhen, China

Science, technology and traditional culture combine in the exhibition centre, which has 'Spiral Scroll' and 'Layered Gardens' as the core concepts. The architectural forms rise in a spiral and overhangs form layered gardens. The building is clad with LED transparent screens that display images at night.

Professional Architecture | Public Space
EXCELLENCE



COMPANY: TEAM_BLDG
PROJECT: The Hakka Triangle House
LOCATION: Guangzhou, China

While containing aspects of traditional Hakka dragon houses, the double-storey design transforms the traditional circles into triangles and uses contemporary theories and materials to open up the building and connect it to the surroundings. The angular roofs, with overhangs supported by clusters of poles, shelter full-height curtain walls that look onto pools.



COMPANY: The Architectural Design & Research Institute of Zhejiang University
PROJECT: United Nations Geospatial Information Management Forum Permanent Site of Deqing County
LOCATION: Huzhou, China

Built on an island on Phoenix Lake, the giant ellipsoid shape that houses a theatre, conference hall, cinemas and other facilities is bisected by the entrance road. While the design uses the imagery of a phoenix breaking through clouds, interiors were inspired by forests, bamboo, mountains and flowing water.



COMPANY: ZXD Architects
PROJECT: Dunhuang Tourism Distributing Center
LOCATION: Dunhuang, China

This gateway to the Mogao Caves is inspired by the Gobi Desert and the rooflines have the shape of sand dunes. The cluster of four joined polygonal shapes are in stone the colour of the desert. The interiors, lit from above, provide a cave-like spatial experience similar to that of the caves.

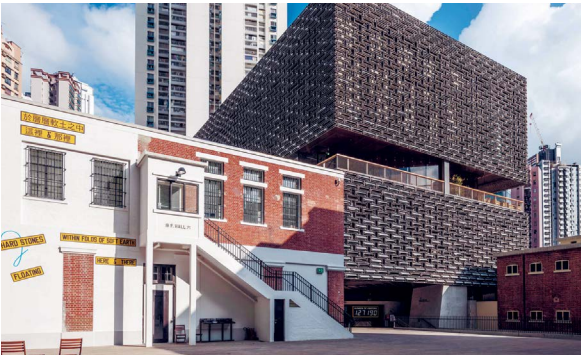
Professional Architecture | Recreation Area
BEST OF CATEGORY

COMPANY: NIL Studio
PROJECT: Infinite Treehouse Communal Classroom
LOCATION: Lantau Island, Hong Kong

Infinite Treehouse Communal Classroom is a hybrid of architecture and landscape design that aims to liberate the learning environment from the standard enclosed space back to the contextual natural world. It is a sustainable bamboo structure in an infinity shape wrapping around three existing trees. The design is both an architectural pavilion and a landscaped platform that evolves from the existing pocket space in the forest. The architecture fully blends into nature to bring a new encounter in the forest. As a free-standing structure it does not affect the health of the trees.



Professional Architecture | Remodelled Heritage
BEST OF CATEGORY



COMPANY: Purcell Architecture
PROJECT: Tai Kwun Centre for Heritage and Arts
LOCATION: Central, Hong Kong

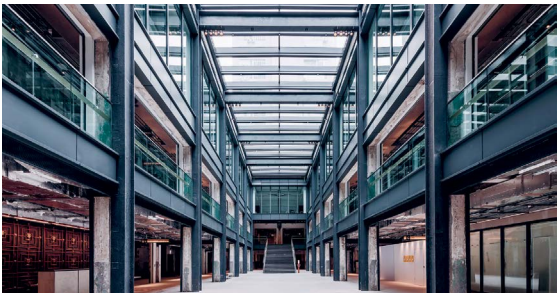
Tai Kwun is a remarkable example of remodelled heritage, building conservation and adaptive reuse that involved collaboration between Purcell, Herzog & de Meuron and Rocco Design Architects. Minimal yet modern intervention was adopted across the 2.4ha site that includes new buildings, plus 16 remodelled heritage buildings. Where possible original materials were refurbished and reused. Replacements were fabricated as close to the originals as possible. Assessment and repair techniques were used for the first time in Hong Kong, including paint analysis.

Professional Architecture | Remodelled Heritage
EXCELLENCE



COMPANY: Antao
PROJECT: Jiaxing Qixing Xiyue Rural Complex Exhibition Centre
LOCATION: Jiaxing, China

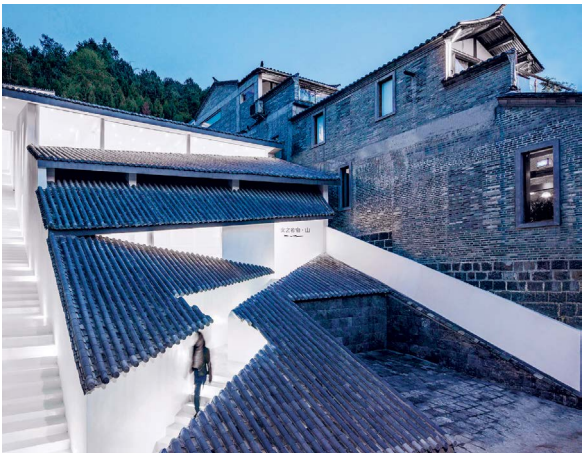
A 2,000sqm (21,500sqf) agricultural glass greenhouse houses a tourist-friendly farmers' and craft market in a village-like layout based on stacked one-metre-square units that form display shelves, streets and lanes. The building was modernised to become an environmentally friendly agriculture complex within a tight budget and a three-month deadline.



COMPANY: Nan Fung Design
PROJECT: The Mills
LOCATION: Tsuen Wan, Hong Kong

Situated in a former textile manufacturing hub, The Mills repurposed three separate cotton mill factories for use by the public, young start-ups, artists and institutions. The project aims to preserve a lost heritage and establish new possibilities for innovation, culture and learning.

Professional Architecture | Residential
BEST OF CATEGORY



COMPANY: Studio Qi
PROJECT: ANNSO Hill Hotel
LOCATION: Heshun, China

The entrance to the 15-room ANNSO Hill hotel cuts a zigzag through the tiled roof that hugs a steep slope in the historical town. The site comprised two different spaces that challenged the connectivity and integrity of the architecture. Rather than competing with adjacent shops and facades, the family-run hotel chose to rejoin the landscape and the roof is pressed against the hill. The all-white internal layout has steps that mimic the steep and winding street and the walls in guest rooms, with views of forest and open landscape, are strategically tiled and slightly sculpted.

Professional Architecture | Residential
EXCELLENCE



COMPANY: Sanjay Puri Architects
PROJECT: 18 Screens
LOCATION: Lucknow, India

Based on a traditional Indian courtyard house, the design of the two-storey, six-bedroom house provides privacy and a respite from outside noise. Patterned screens on outdoor seating areas for rooms on the south, west and east sides, provide shelter from the sun. Built in raw concrete, it uses a muted natural palette of sandstone and wood.

Professional Architecture | Transportation Hub
BEST OF CATEGORY

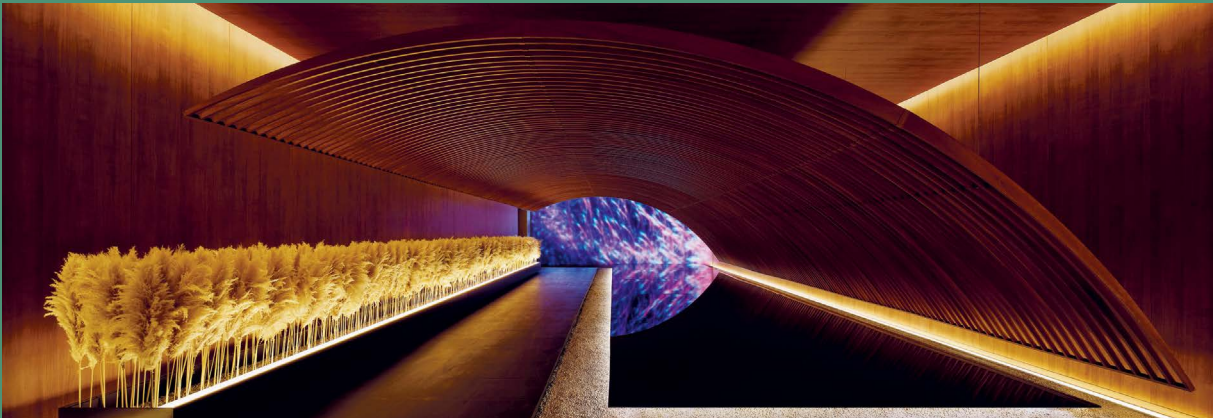


COMPANY: Andrew Bromberg at Aedas
PROJECT: Hong Kong West Kowloon Station
LOCATION: West Kowloon, Hong Kong

Hong Kong West Kowloon Station serves as a gateway to Hong Kong as well as a terminus to the high-speed rail network of mainland China. The design was inspired by the idea of forces converging on Hong Kong – wind, pedestrian flows, traffic and the converging tracks coming into the station. At the heart of the station is the enormous 20-metre-below-ground central void with the roof supported by large tree-like column bundles; they lift 4,000 panes of glass to fill the station with light and allow passengers their first glimpse of the towers of the city. A large public space on the station's rooftop is a major civic gesture.

TITANIUM AWARD

Professional Interior Design | Recreation Area
BEST OF CATEGORY



COMPANY: Shanghai Hip-Pop Design Team
PROJECT: Jiyu Spa
LOCATION: Danyang, China

The word ‘feeling’ is the key to this design. At the spa, visitors are immersed in a peaceful atmosphere where their senses are awakened and feelings and images ignored in life are allowed to emerge; people rediscover and feel life from a new perspective. Dramatic effects are created by transparent and reflective glass, which reveals hidden contents and shows the balance between light and shadow as well as the surroundings. The atmosphere seeks to take visitors away from daily life and purify their body and mind. In this place, people who are increasingly restless are soothed by the gentle waters.

See page 45 for other Recreation Area category winners



Professional Interior Design | Bar & Restaurant
BEST OF CATEGORY



COMPANY: Stickman Tribe
PROJECT: Mercedes me Chengdu
LOCATION: Chengdu, China

Mercedes me Chengdu restaurant sits adjacent to the Sui Dynasty (581-618) Daci monastery, emphasising the contrast between contemporary Chengdu and its history. Copper and brass feature throughout the two-storey property with an eight-metre long copper hood above the craft brewery and copper pipes leading upstairs. The central spine of the restaurant is highlighted by a custom wood-trussed feature with fibre-optic lights, creating an ambient lantern-like effect. Local roof shingle tiles outlined in polished brass sit above curved corner banquettes. Custom-made balloon-like light fittings floating above the seating weave another layer to the design.

Professional Interior Design | Bar & Restaurant
EXCELLENCE



COMPANY: Hirsch Bedner Associates Hong Kong
PROJECT: Mandarin Oriental, Wangfujing – Café Zi and MO Bar
LOCATION: Beijing, China

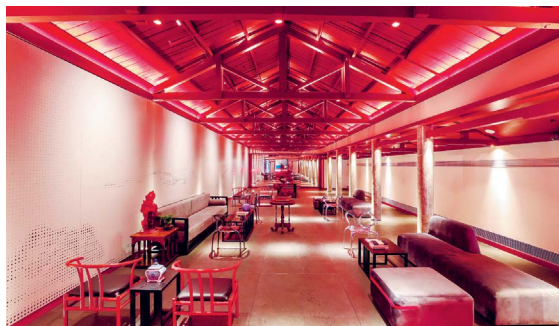
Inspired by the concept of dualism in ancient Chinese philosophy, Café Zi was envisioned as a Chinese garden blossoming in the morning sun, while the MO bar was designed as a midnight garden. While the restaurant is fresh and lively with laser-cut floral panels, the bar is dark and moody with lacquered cabinets and indigo panels.



COMPANY: Imafuku Architects
PROJECT: Dongshang
LOCATION: Beijing, China

Bamboo is used throughout Dongshang, a Japanese restaurant that also has Chinese elements. Guests enter through an arched bamboo tunnel, while the main dining space has bamboo walls and a canopy of suspended bamboo sticks. The wide selection of sake and Japanese whisky is displayed on black steel shelves with vertical bamboo louvres.

Professional Interior Design | Bar & Restaurant
EXCELLENCE



COMPANY: Kiefenzapfen Design Shanghai
PROJECT: Liangshe Banquet
LOCATION: Shanghai, China

Liangshe Banquet is an immersive Tang Dynasty-themed restaurant that combines Chinese traditional culture, food, music, dance, drama and modern multimedia. Its multimedia restaurants have projection, lighting, sound, fragrance and air-purification systems. Decor is mostly black and white with dashes of red and walls with 3D printing.



COMPANY: Linehouse
PROJECT: John Anthony
LOCATION: Causeway Bay, Hong Kong

John Anthony was the first Chinese man to be naturalised as British (in 1805) and the design of the restaurant is an interpretation of his journey from East to West. After entering, guests encounter terracotta render walls with an arched ceiling clad in pink tiles and a lime-green terrazzo floor.



COMPANY: MAS Studio.
PROJECT: Sun's Bazaar
LOCATION: Admiralty, Hong Kong

Sun's Bazaar's interior design is built around tea production and rice farming. The tea lounge is inspired by bamboo baskets used for drying tea leaves with a ceiling that has a plaid bamboo pattern. The dining space has a cottage motif with a wooden archway entrance; the roof is decorated with rattan wallpaper.



COMPANY: Max Lam Designs
PROJECT: Lifetastic Patisserie
LOCATION: Tsim Sha Tsui, Hong Kong

Brass-lined arches, in five layers like a cake, create a tunnel-like entrance for the patisserie. Three different types of seating are fitted into the 45sqm (480sqf) space that has wallpaper with five different textures, patterns and shades of blue; there are also white marble display cabinets.

Professional Interior Design | Bar & Restaurant
EXCELLENCE



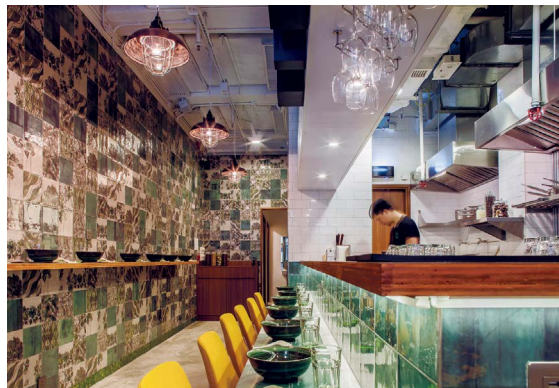
COMPANY: NONG Studio
PROJECT: Hong Kong Wahsum Tongshui
LOCATION: Shanghai, China

Inspired by Wong Kar-wai films of 1950s Hong Kong, the restaurant has a dark-brown exterior with brass rivets that contrasts with the light mint-green interior and chrome rivets and furniture. The ceiling is an aluminium grille while the floor is a marble mosaic.



COMPANY: Office Urban:I Limited
PROJECT: AHA Restaurant and Bar
LOCATION: Central, Hong Kong

Golden arches and an electroplated steel finish on screens give a strong street-front identity to the restaurant, whose irregular-shape meant that all details had to be meticulously planned. The open vaulted ceiling is lit by bespoke porcelain beehive-shaped lamps while a golden metallic pipe-organ-inspired wine display frames the bar area.



COMPANY: OPENUU
PROJECT: Mean Noodles
LOCATION: Sheung Wan, Hong Kong

The design team are also the chef-owners of the casual noodle bar that has green stainless-steel window frames and logo, and a vintage metal concrete finish. The main colours are green, white, mustard yellow, with white marble tabletops and marble mosaic tiles, subtle green grout, green floral tiles, and mustard-yellow chairs.



COMPANY: One Bite Design Studio
PROJECT: Karavanstop Cafe
LOCATION: Hong Kong International Airport

The coffee shop that promotes hiking in Hong Kong has a ceiling and feature wall of green triangular shapes that represent the area's mountainous landscape. Tree trunks form part of coffee tables and show the variety of trails in the region, while a central marble high table also has a landscape-related pattern.

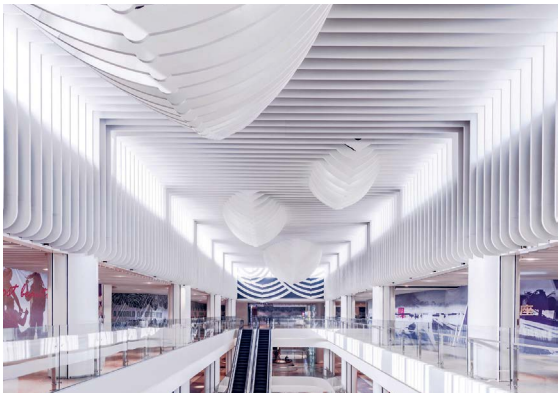
Professional Interior Design | Commercial & Retail
BEST OF CATEGORY



COMPANY: ARCHSTUDIO
PROJECT: Lily Nails Salon (Taiyanggong Store)
LOCATION: Beijing, China

Using the imagery of a forest, five tree-shaped structures made from transparent rhombic aluminium mesh create separate spaces below. The 153sqm (1,650sqf) nail salon consists of open and private manicure areas, a beauty room and a staff room, with 18 seats for customers. The mesh was made into 300mm-diameter cylinders and arranged into integrated units to help construction and save costs. The thickness of the mesh units was tailored to the size of the 'tree', while light is reflected at different angles creating shadows. Floors are in polished grey laser-cut granite, dotted with terrazzo 'leaves'.

Professional Interior Design | Commercial & Retail
EXCELLENCE



COMPANY: Arizon Design
PROJECT: Inzone
LOCATION: Dezhou, China

The rooftop, platform and atrium are elements of the main corridor that winds through this shopping mall like a river. The forms of traditional boats are used in the design as slatted boat-keel shapes – 'boat bottoms' – in the scattered atriums that introduce natural light. Aluminium board is used for cost-effective visual effects.



COMPANY: Arizon Design
PROJECT: Joy City Kid's World
LOCATION: Shanghai, China

This entertainment and retail area is designed for kids aged 3 to 10. Derived from the concept of Dandelion Hill, the whole space flows along coloured 'contour lines' with interactive spaces. Integrating the three-layered staggered structure of different heights was a challenge. Some 200 colours are used throughout.

Professional Interior Design | Commercial & Retail
EXCELLENCE



COMPANY: Atelier Tao+C
PROJECT: JHW Store
LOCATION: Zhengzhou, China

A traditional building material, granolithic plaster, and brushed stainless steel is used throughout the property to create an austere monochrome space for the two-storey menswear shop. On both floors are glass-box display and installation areas. The centre of the ground floor is recessed by three steps to create a sunken area in front of the reception desk.



COMPANY: Atelier ZZ
PROJECT: Phoenix-Tree Garden
LOCATION: Beijing, China

A folding wall and a moon door change the internal space of the teahouse garden in a hutong courtyard. Several tea rooms with different views were made in an area of less than 200sqm (2,200sqf). A stacked red-rock mountain, a steel grille bridge, grey cobblestone paving and grey tiles give the garden a simple and authentic atmosphere.



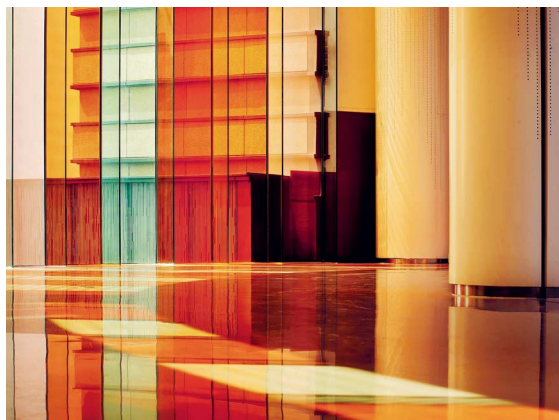
COMPANY: COLOURLIVING
PROJECT: Alan Chan & COLOURLIVING
LOCATION: Wan Chai, Hong Kong

COLOURLIVING and Alan Chan created a 150sqm (1,600sqf) gallery-style home consisting of a foyer, dining room, living room and garden to help customers create unique personalised spaces. The space is a mix of vintage and modern crafted objet d'art and decor hand picked by Alan Chan.



COMPANY: HCD IMPRESS
PROJECT: Xi'an Legend Chanba the Willow Shores Sales Center
LOCATION: Xi'an, China

The sales centre combines traditional elements of north-eastern China with international design and materials including rattan, stone, wood and brick to create a natural environment that reflects both old and new. The glass-art lighting with a rain-drop shape is inspired by the Ba river.



COMPANY: Hong Kong Fong Wong Architects Group
PROJECT: Bai Cheng Tian Di Shopping Mall
LOCATION: Henan, China

The three-storey shopping centre embodies the contemporary culture of the city and the culture of the company, 'rooted in the central plains and benefiting the people'. Lines are intertwined and interlaced to symbolise the city's topography and the plains typical of the surroundings.



COMPANY: Karv One Design
PROJECT: Hyperion Longfor TOD Exhibition Mall
LOCATION: Chongqing, China

The Longfor Hyperion project is China's first high-speed rail transit-oriented development (TOD) scheme in a central business district. The exhibition spaces, with a sleek ceiling and a striking bar counter at the entrance, were arranged along flow lines, while technology provides sensory experiences about the possibilities of future urban development.



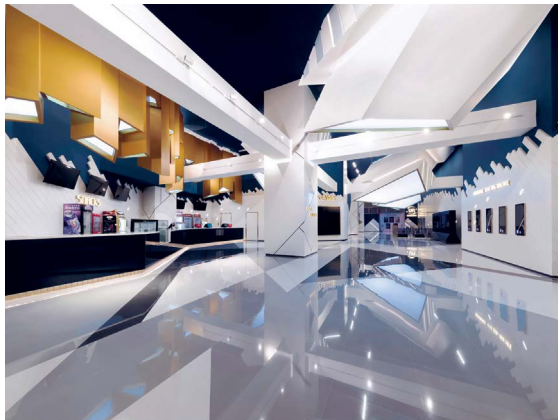
COMPANY: KL&K DESIGN
PROJECT: Reading Mi
LOCATION: Minying International Trade Center in Dongguan

The largest Reading Mi, the Dongguan shop won the title of China's most beautiful bookstore last year. An anteroom, a transition space before entering the store, has a labyrinth on the wall, which expresses the spirit of the store. An ancient Greek-style theatre is in the central square.



COMPANY: Ministry of Design
PROJECT: Durasport Retail Store
LOCATION: Singapore

This sports store in Changi Jewel Airport targeted at high-performance athletes competes with online sales by using simulators to provide an immersive retail experience. High-grade stainless steel is used throughout to create a laboratory-type R&D environment, with a customised display system of shelves, racks and notched display walls with integrated LED lighting.



COMPANY: Oft Interiors
PROJECT: The Beauty of Deconstructivism – UA Cinemas
LOCATION: Shanghai, China

Deconstruction is the basis of the design of this cinema and foyer with abstract angular forms and irregular columns with lights that descend from the ceiling. A degree of coherence is created by the use of colour – champagne gold, greyish blue and white.



COMPANY: One Plus Partnership
PROJECT: Liuzhou Jinyi Cinema
LOCATION: Liuzhou, China

The winding Liu river and the curling shape of rolls of film were the inspiration for the long curving metal sheets suspended from the ceiling of the cinema foyer. The gunmetal colour is repeated on carpets, walls and in furniture. In the bathrooms, mirrors, washbasins and even the door handles are curved.

Professional Interior Design | Commercial & Retail
EXCELLENCE



COMPANY: One Plus Partnership
PROJECT: Wuhan Panlong Plaza Yinxing Cinema
LOCATION: Wuhan, China

Grey cement is the sole material used in the cinema: the grey colour extends to the chairs, walls and carpet of the auditoriums. The walls are made with acoustic panels in the pattern reflecting the lobby's structure. Lights are installed between the acoustic panels, creating a 3D effect.



COMPANY: Panorama Design Group
PROJECT: Kids Winshare
LOCATION: Chengdu, China

Paintings by Joan Miró inspired the design of this children's bookstore as an imaginative 'bookscape' with spiralling bookshelf units in white and yellow and cosy oval-shaped transparent reading pods. Another section has a dome-shaped theatre surrounded by multi-functional classrooms, and an all-day family restaurant.



COMPANY: Xiamen Zhongyue Building Decoration Design
PROJECT: XiaoHong Design Bookstore
LOCATION: Xiamen, China

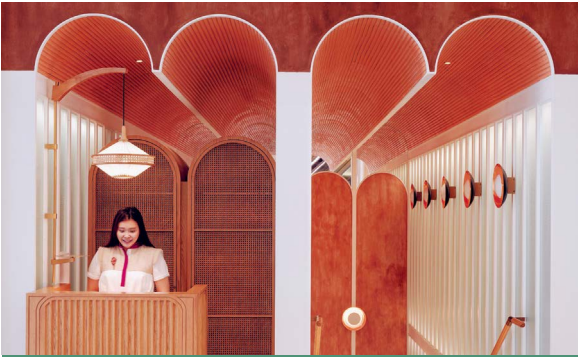
The design team owns this bookshop, and wanted a tranquil space. Wooden benches are set in the centre of the shop and a wall on the south side acts as a noise barrier, while two windows admit light. The interior is painted a warm grey, inspired by the colour of black tea.



COMPANY: Yebin Interior Design Studio
PROJECT: Choclab
LOCATION: Hangzhou, China

Choclab is a fashion store and restaurant that hides behind a door that seems to be permanently closed. The uncluttered white and gold interiors are divided into zones by criss-crossing rods. On the second floor, black iron walls, polished metal and warm-toned leather change the mood.

Professional Interior Design | Green & Sustainable Design
BEST OF CATEGORY



COMPANY: Linehouse
PROJECT: John Anthony
LOCATION: Causeway Bay, Hong Kong

The restaurant concept draws on the historical figure John Anthony, the first Chinese man to be naturalised as British, in 1805. He embarked on a voyage from East to West arriving in Limehouse, in the London docklands. The design of the restaurant is an interpretation of his journey, exploring the architecture and materials he may have encountered, to create a British tea hall turned Chinese canteen. Key to the project was integrating sustainable and eco-friendly materials to align with Maximal Concept's core values.



Professional Interior Design | Green & Sustainable Design
EXCELLENCE



COMPANY: Matrix Design
PROJECT: Greenland Foshan Gaoming Jingulang Resort Town
LOCATION: Foshan, China

In the reception lobby of the sales centre, the designer has been inspired by stone, mountains and forests to refer to Lingnan culture, pottery, Cantonese opera and other cultural and historical elements. The landscape and leisure areas embody simplicity and an abstract, freehand style.



COMPANY: Matrix Design
PROJECT: Wuhan Jindi Beichen Yuefenghua Sales Centre
LOCATION: Wuhan, China

In a location where diverse local cultures coexist, the traditional courtyard layout leads visitors through wooden gates and a lobby with a glass framework and Chinese-style structure. The video room, sand-table area and discussion area, all employ modern techniques and traditional materials: antique-style metal, water-textured glass and rattan plaited materials.

Professional Interior Design | Hotel & Resort
BEST OF CATEGORY



COMPANY: Neri&Hu Design and Research Office
PROJECT: The Sukhothai Shanghai
LOCATION: Shanghai, China

To create an urban oasis in the city, the restaurant and bars in the hotel are inspired by gardens; for instance, there's a Thai herb and vegetable garden using green terrazzo and tiles with a custom leaf-like pattern. Public areas are treated as an exterior piazza that opens onto a series of gardens. The path to the upper floors is an extended garden path that leads the guests to their own retreats. The grand staircase is of stacked grey terrazzo slabs with a great wooden lantern above.

Professional Interior Design | Hotel & Resort
EXCELLENCE



COMPANY: BLVD International
PROJECT: Le Méridien Zhongshan
LOCATION: Zhongshan, China

The lofty lobby has dark timber screens stretching full height while the three organically shaped free-standing reception counters stand on the grey marble floor. An aerial sculpture of a pearly nautilus floats above. High-backed chairs and grilled screens enclose another part of the lobby as a library.

Professional Interior Design | Hotel & Resort
EXCELLENCE



COMPANY: CCD/Cheng Chung Design
PROJECT: Canopy by Hilton Chengdu City Centre
LOCATION: Chengdu, China

The hotel incorporates some of Chengdu's cultural and architectural elements, including street markets, tea culture, Sichuan opera, spicy food and atmospheric alleyways. Warm grey tones with touches of orange are used throughout and can also be seen in the featured brick work in the lobby.



COMPANY: FHAMS
PROJECT: Four Points by Sheraton Nagoya
LOCATION: Tokoname, Japan

FHAMS designed all 319 rooms, including one suite and nine junior suites, restaurant, bar, gym and the front-of-house area of the hotel near Chubu International Airport. A vintage airplane engine is displayed at the entrance. Fabrics with original drawings of ships and planes feature in guest rooms.



COMPANY: Wilson Associates
PROJECT: Skye Niseko
LOCATION: Niseko, Japan

All living rooms and bedrooms in this hotel have views of mountains and ski slopes. Using the less-is-more concept, the designers employed a limited number of natural materials in interiors – wood, stone, concrete and glass. Regional influences were incorporated and the colour palette was kept warm and neutral.

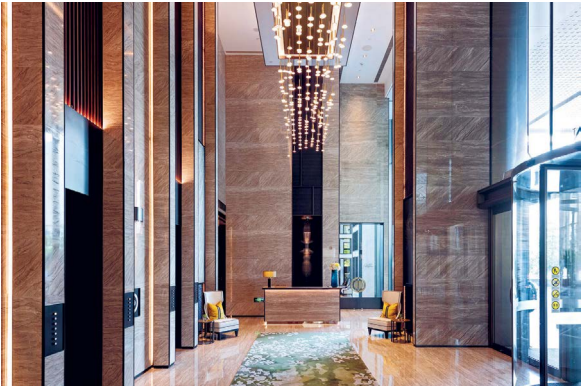
Professional Interior Design | Institution
BEST OF CATEGORY



COMPANY: MAI Atelier
PROJECT: Chapel of Peace
LOCATION: Jordan, Hong Kong

The challenging irregular shape of the podium level resulted in a central foyer, a diamond-shaped chapel and a pantry and offices. The fan-shaped chapel ensures that all seats are facing the altar. Noise from busy roads on two sides is reduced by doubled-glazed arched windows that diffuse natural light and have seating niches for contemplation. The controlled construction budget was the prime factor in selecting a minimalistic approach in the design: spaces are unified with extensive use of pale ash wood.

Professional Interior Design | Lobby
BEST OF CATEGORY



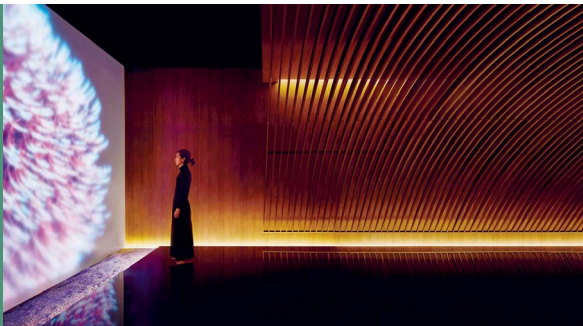
COMPANY: LW
PROJECT: Raffles, One Shenzhen Bay
LOCATION: Shenzhen, China

The design team was tasked with creating a contemporary interior that pays respect to Chinese culture. The client wanted to integrate the location of the hotel in One Shenzhen Bay into the design and to take full advantage of the spectacular views of the Pearl River Delta and mountains. Visitors are transported from the double-volume ground floor entrance straight to the Sky Lobby on the 34th floor. Materials used include timber, marble and metal details, paired with softer accents. The 168 rooms and suites showcase interesting artefacts.

Professional Interior Design | Lighting Design
BEST OF CATEGORY

COMPANY: Shanghai Hip-Pop Design Team
PROJECT: Jiyu Spa
LOCATION: China

Dramatic effects are created by transparent and reflective glass, which reveals hidden contents and shows the balance between light and shadow and the surroundings. The atmosphere seeks to take visitors away from daily life and purify their body and mind. In this place, people who are increasingly restless are soothed by the gentle waters.



Professional Interior Design | Office
BEST OF CATEGORY

COMPANY: M Moser Associates
PROJECT: Standard Chartered Bank (15F)
LOCATION: Central, Hong Kong

Standard Chartered wanted to bring its people closer together within one multi-functional space that would encourage collaboration and social interaction. The key elements were mobility, flexibility, hospitality and wellness. This communal space embraces comfort with a cafe, kitchen and flexible movable furniture. The entrance has a commodious hot-desking area and this 'pop-up' floor can be reconfigured for community events and presentations. Homely furniture – sofas, armchairs and low tables – encourage informal conversations. Vinyl and wood flooring create separate spaces with timber, adding warmth.



Professional Interior Design | Office
EXCELLENCE



COMPANY: DRAFT Inc
PROJECT: UX Square Tokyo
LOCATION: Tokyo, Japan

The reception lobby required a permanent earthquake-resistant brace, and with this in mind the ceiling has a skeletonised style with the steel frames exposed to create a more spacious feel. A lobby illustration doubles as a wall painting and signage. A variety of workspaces – booths, standing desks and rooftop terraces – are included.



COMPANY: Joe Ho Associates
PROJECT: MAMA.CN Office
LOCATION: Guangzhou, China

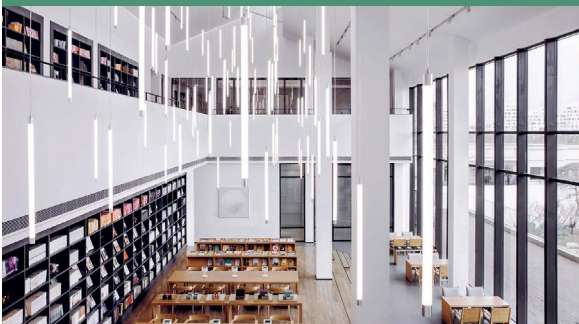
'Be a child again' was the concept for this Internet service provider's office. The brightly coloured reception, with vertical plants, swings and mushroom pouffes, has step seating for meetings. A large conference room and three other meeting rooms are in the back office, which also has a tree house, a climbing wall and hanging bars.

Professional Interior Design | Pop-Up
BEST OF CATEGORY

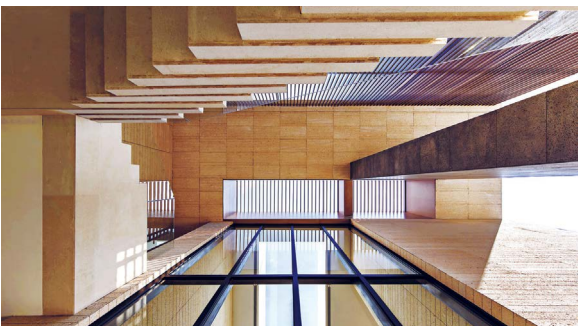


COMPANY: Drawing Design Consultant
PROJECT: Heart's Yearnings-R&F Bay, Yantai
LOCATION: Yantai, China

This library becomes a place for meditation, combining culture and humanistic care. A sculpture of little girl on a balance beam was made on-site. Light floods into the spaces from full-wall windows. A waterfall of lights is suspended from the ceiling.

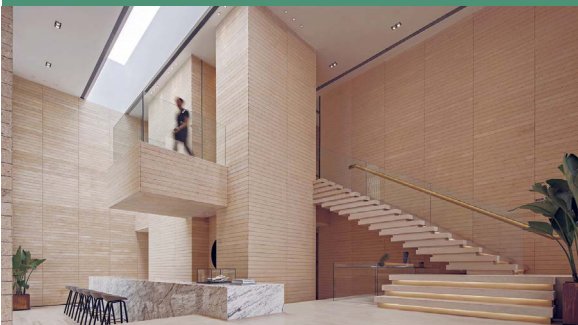


Professional Interior Design | Public Space
BEST OF CATEGORY



COMPANY: Matrix Design
PROJECT: Times Group Foshan Lion Mountain Club
LOCATION: Foshan, China

The design promotes a sense of calm with colour, form and texture, combining elements of the local environment through simple modernism and a sense of transparency. Pale stone and polished marble creates a warm texture and sense of quality. The reception area has a pale marble desk and the foyer is lined with stone in horizontal rungs while the cantilevered stairs wind around an angular column.

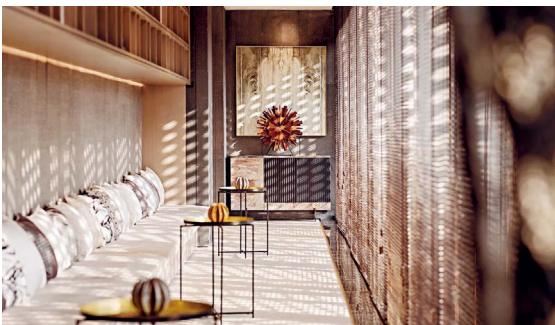


Professional Interior Design | Public Space
EXCELLENCE



COMPANY: CCD/Cheng Chung Design
PROJECT: Wuhan Vanke Erqi
LOCATION: Wuhan, China

A simple box was selected by the concept: ingenious and enabling multi-dimensional combinations of spaces. As an example of the flexibility, the current apartment sales office operates as a showcase and in the future will become an owners' clubhouse. The spaces combine the traditional oriental culture and modern forces of innovation.



COMPANY: Matrix Design
PROJECT: Shanghai Jindi Zhuqiao AD2040 Sales Center
LOCATION: Shanghai, China

The main materials are marble with metal, contemporary artistic glass and wood veneer. The negotiation area integrates traditional and modern and Chinese elements, such as metal screens, making the space more peaceful. The diffused light source around the pool creates a play of shadows. Modern art is featured throughout.

Professional Interior Design | Public Space
EXCELLENCE



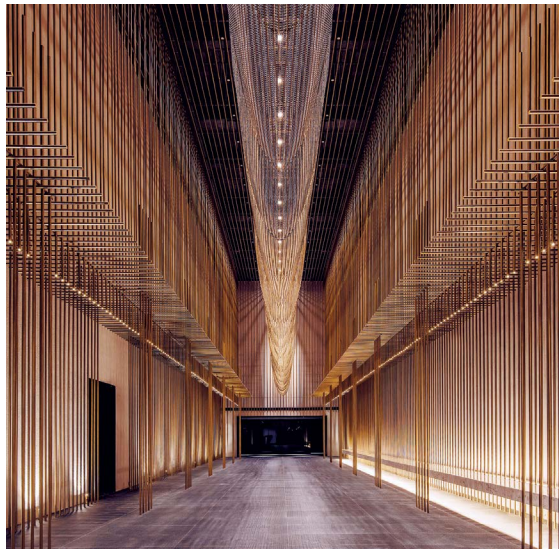
COMPANY: Nature Times Art Design
PROJECT: Bodi Center
LOCATION: Hangzhou, China

Located on the 32nd floor of the highest building in Hangzhou, the project was described as ‘a hermit shelter above clouds’, a workplace that has elements of a spiritual retreat. The space interprets the oriental philosophy idea that chaos and tranquillity coexist. The premium materials used throughout are enhanced by works of art.



COMPANY: TEAM_BLDG
PROJECT: The Gallery
LOCATION: Jiangmen, China

The Gallery is a sales office and an art exhibition hall. Each function has been put in a separate box and the material inside each box varies according to its function. A large wall of white punched aluminium with milky white glass makes the space clean and bright.



COMPANY: The Oval Partnership
PROJECT: Qujiang Creative Cultural Centre
LOCATION: Xi'an, China

This state-of-the-art multi-functional theatre introduces elements and materials that evoke a modern re-interpretation of the architectural traditions of Xi'an. The Chinese *lian lian*, a connecting structure or corridor, is created using 8,000 pieces of finely crafted bronze metal flutes suspended from the ceiling and a 13-metre-long metallic draping chain veil provides contrasting softness.

Professional Interior Design | Public Space
EXCELLENCE



COMPANY: YuQiang & Partners
PROJECT: Hangzhou Canal Vanke Center
LOCATION: Hangzhou, China

Hangzhou is a centre for the automobile industry, and the sales centre uses cars as its central concept; a car runway winds from the ground through the building to the top. The reception area is an open public space, in the manner of a transparent display cabinet. The lounge area has floor-to-ceiling windows.



COMPANY: YuQiang & Partners
PROJECT: Tianjin World of Sunac Sales Center
LOCATION: Tianjin, China

The space is divided into three areas: reception, model area and negotiation. Pendant lighting fixtures with golden frames hang over the lobby, forming concentric rings and a tunnel. Perforated metal panels create a smooth arc-shaped corridor to the large and transparent house-shaped structures.

Professional Interior Design | Recreation Area
EXCELLENCE



COMPANY: Shanghai Hip-Pop Design Team
PROJECT: From Winter to Spring Clubhouse
LOCATION: Nanjing, China

Minimalism can appear cold, so great attention has been paid to material colours and textures. Wood veneers and floors are pale and opaque paper makes the light soft and warm. Windows with insulating glass were cut into the west and north walls to reveal the landscape.

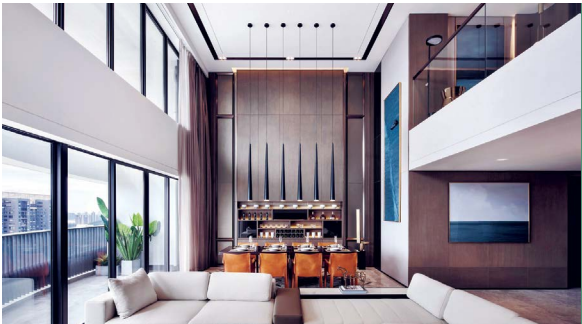
Professional Interior Design | Remodelled Heritage
BEST OF CATEGORY



COMPANY: Kris Lin International Design
PROJECT: The Park
LOCATION: Shanghai, China

Situated between two landmark parks, the concept of The Park became the starting point for the design – to implant a park in an indoor space and embody the oriental idea of a bridge over flowing water, and the harmony between humanity and nature. The entrance is on the first floor and the VIP rooms are on the second floor, where numerous small shops were broken up to create an interior garden. One of the major challenges was the construction of an indoor pond. The design combines elements of modern technology into Chinese style with light strips on the floor of negotiation area.

Professional Interior Design | Residential
BEST OF CATEGORY



COMPANY: CCD/Cheng Chung Design
PROJECT: ZhongXin Mangrove
LOCATION: Zhuhai, China

Zhongxin Mangrove is located in Zhuhai, covering an area of 160ha; the housing is aimed at people aged 35 to 50 years – property buyers who seek high quality. The project aims to be high-end residential with leisure and entertainment facilities, distinguished by international design and top-quality timber finishes.

Professional Interior Design | Residential
EXCELLENCE



COMPANY: Bean Buro
PROJECT: Urban Cocoon
LOCATION: Happy Valley, Hong Kong

A 110sqm (1,200sqf) apartment in Happy Valley was designed under the interactive play theories of Montessori. Activity 'cocoons' such as bedrooms and a study were placed so that they had the best views. Light timber was used in the bedroom and living area, and the entrance and hallway were a calming grey with bookshelves as dividers.



COMPANY: CCD/Cheng Chung Design
PROJECT: Excellence Zhuhai Tangjia Bay Villa B Apartment
LOCATION: Zhuhai, China

Just 800 metres from Tangjia Bay, the basis of this project is the mix of modernity and traditional oriental aspects. Four key elements were important to the concept this project – East, Harmonious, Quiet and Quality – as the residential units are aimed at attracting older, discerning homebuyers.



COMPANY: Couture Homes Properties
PROJECT: DUKES PLACE
LOCATION: Jardine's Lookout & Wong Nai Chung Gap, Hong Kong

The facade of DUKES PLACE combines premium Italian stone and a glass curtain wall adorned with champagne-gold metallic curves. The interior of the duplex apartment was led by British designer Tara Bernerd, who integrated the external curves into the interior architecture to create a soft and seamless flow between spaces.



COMPANY: Danny Chiu Interior Designs
PROJECT: The Morgan
LOCATION: Mid-Levels, Hong Kong

Faced with a 37sqm (400sqf) open-plan apartment, the design took advantage of the high ceiling and constructed a custom-built cylindrical stacked volume that accommodated a dining table, bookshelves, spiral stairs and a bedroom on top. Mirrored walls and crafted mouldings incorporate high-density storage to maintain a clean, uncluttered space.

Professional Interior Design | Show Flat
BEST OF CATEGORY



COMPANY: Ippolito Fleitz Group
PROJECT: CIFI Show Flat
LOCATION: Shanghai, China

Aimed at young millennials, the show flat employs strong colours and sculptural furniture to create a strong first impression in the entrance hall. The kitchen, dining and living area forms a flowing, generous space but with the individual areas clearly defined. The furniture is simple, with kitchen stools, cushions and side tables providing colour accents against white lamella walls and white terrazzo flooring. Bedrooms, guest rooms and study rooms are private areas and disappear behind 'hidden' doors in the entrance area.

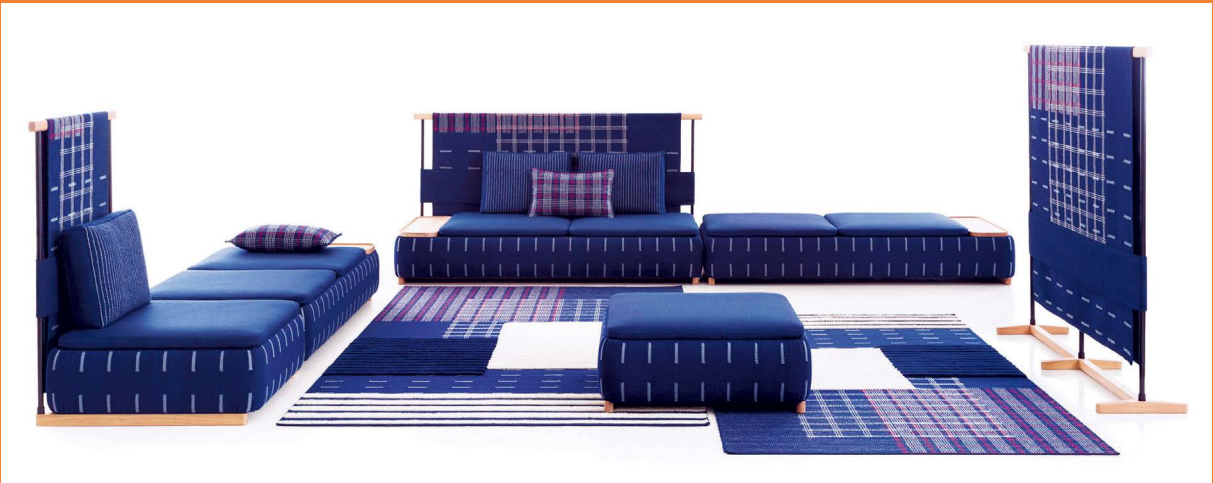
Professional Interior Design | Show Flat
EXCELLENCE



COMPANY: Max Lam Designs
PROJECT: The Inward Journey
LOCATION: Macau

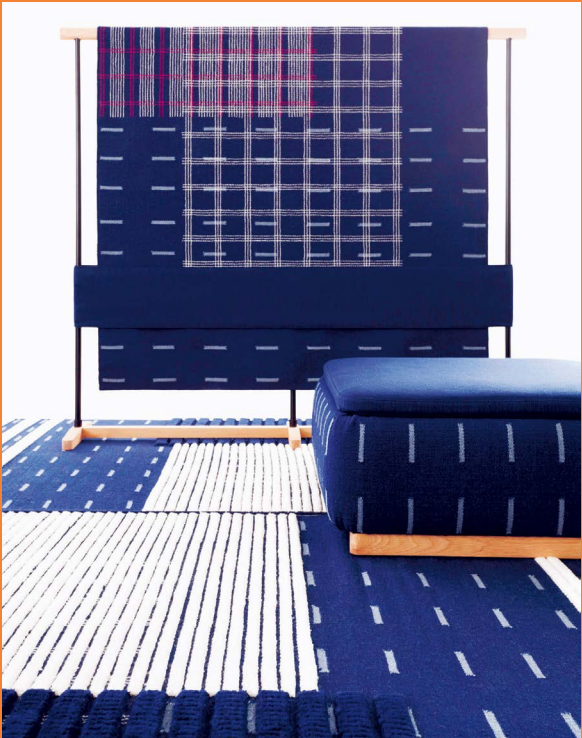
This 280sqm (3,000sqf) flat welcomes people with its natural materials – a minimalist symphony of wood, stone, paper and an occasional hint of brass with demure lighting. The classic simplicity of the common areas – the bar, dining area and living room – extends to the Japanese tearoom and the master room on a raised level.

TITANIUM AWARD
Professional Product Design | Furniture
BEST OF CATEGORY



COMPANY: Neri&Hu Design and Research Office
PROJECT: LAN Collection for GAN
LOCATION: China

Neri&Hu breaks apart the normally bulky and cumbersome sofa into its components, which can be reassembled in flexible parts. The back component draws from the origins of GAN as a textile brand by referencing old-style weaving looms. The vertical structure allows handmade fabrics to be hung as a backdrop, while an elastic woven strap serves as a support for the movable back cushions. The seat element is also composed of separate cushions and a wooden surface which can act as a small side table – each interchangeable for various configurations.



Professional Product Design | Bathroom Product

BEST OF CATEGORY



COMPANY: Roca Sanitaryware
PROJECT: Sonar collection
LOCATION: Hong Kong

Designer Patricia Urquiola developed a distinctive D-shape for her sanitaryware, complemented in some cases by a sloping front, and a three-dimensional texture for the washbasins' surface. Her inspiration for the texture, which highlights the delicate aesthetics of the SaphirKeramik material, comes from the way in which sound propagates in water. In addition to the washbasins, the range has WCs, a bidet, bathtub and a suite of bathroom furniture.



Professional Product Design | Bathroom Product

EXCELLENCE



COMPANY: LIXIL Water Technology Asia
PROJECT: American Standard | EasyFLO Collection
LOCATION: Singapore

EasyFLO's mono faucets with newly developed push-valve technology feature a modern, minimal yet intuitive design – just a single button to turn the water on and off. The two-piece design of the basin faucet's body and the use of plastic for the shower products offers several colours and finishes.



COMPANY: LIXIL Water Technology Asia
PROJECT: American Standard | EasySET Shower System
LOCATION: Singapore

The EasySET push-button shower options were developed for smaller Asian bathrooms. The system combines a sizeable showerhead, a multi-spray hand shower, an easily adjustable hand shower-holder with a control unit featuring a large storage tray and two knobs to activate the water outlets and adjust the flow, as well as one knob for temperature adjustment.

Professional Product Design | Bathroom Product

EXCELLENCE



COMPANY: LIXIL Water Technology Asia
PROJECT: INAX | Aqua POWER Pressure Boosting and Water Saving Hand Shower
LOCATION: Singapore

HERO is INAX's innovative hand shower with a unique pressure-boosting and water-saving technology that addresses water pressure, scarcity and quality issues for people in some parts of Asia. Without complex internal mechanisms, the inside cavity and micro perforated spray face boost the water flow while keeping the spray stable under different pressure conditions.



COMPANY: Roca Sanitaryware
PROJECT: Baia Collection
LOCATION: Hong Kong

The Baia Armani/Roca collection of basins, baths and toilets intentionally references the past but uses avant-garde technology. Attention has been paid to the ergonomics of each piece, while introducing surprising metallic finishes in matte gold and dark metallic. The retro-look range of faucets uses innovative thermostatic technology.

Professional Product Design | Floors & Coverings

BEST OF CATEGORY



COMPANY: Tat Ming Wallpaper
PROJECT: Arte – Moooi Extinct Animals
LOCATION: Hong Kong

The Extinct Animals wallcoverings are inspired by Moooi's Museum of Extinct Animals, which celebrates the natural world. Each pattern is inspired by the characteristics of one extinct animal. Striking combinations of colours, features with patterns of fur, plumage or skin bring it vividly back to life on walls.



Professional Product Design | Floors & Coverings
EXCELLENCE



COMPANY: **Tat Ming Wallpaper**
PROJECT: **FAUS – Masterpieces**
LOCATION: **Hong Kong**

FAUS's Masterpieces laminated flooring designs are inspired by 18th- and 19th-century European palaces and include 18 herringbone and chevron designs, as well as marquetry. The technology creates impermeable surfaces that provide water-resistant laminate for up to 72 hours, making them suitable for kitchens and bathrooms.



COMPANY: **Tat Ming Wallpaper**
PROJECT: **Patcraft – Splitwood**
LOCATION: **Hong Kong**

Splitwood, part of Patcraft's high-performance flooring solutions for the commercial market, embraces the beauty of worn wood where natural imperfections become design elements. In Splitwood, textural grooves and cracks are enhanced with metallic inlays of bronze, silver and gold. Products are engineered for high-demand environments, resisting ground-in dirt and particles.

Professional Product Design | Green Product
BEST OF CATEGORY



COMPANY: **Tat Ming Wallpaper**
PROJECT: **Designtex 5x5 Collection**
LOCATION: **Hong Kong**

To celebrate 25 years since the creation of Crypton, Designtex commissioned five contemporary artists from around the globe to design a pattern to be digitally printed on Crypton fabric. Designtex has achieved SCS Indoor Advantage Gold Certification for low emissions on all their Digital Wallcoverings printed in Portland, USA. The patterns are:
Bitdrift by Phillip David Stearns
Criss Cross by Kapitza
Five Cities by Ellie Malin
Line Variations by Arturo Guerrero
Social Dance by Elizabeth Atterbury

Professional Product Design | International Product Design
BEST OF CATEGORY

COMPANY: **Neri&Hu Design and Research Office**
PROJECT: **The Society Collection for Paola C**
LOCATION: **China**

This collection of functional pieces for entertaining offers simple geometries crafted with coloured glass in warm, inviting tones and bronze details. Each piece in the set, which includes a fruit bowl, vase, carafe, candle holders and tea set, has a unique shape and material combination but remains part of the same family. The brand ethos of Paola C is to create objects that might encourage encounters between people; the collection appeals to a sense of nostalgia but also offers a whimsical and quirky side.



Professional Product Design | Kitchen Product
BEST OF CATEGORY



COMPANY: **COLOURLIVING**
PROJECT: **Franke - Smart Deco Hood**
LOCATION: **Hong Kong**

The Franke hood comes in a selection of seven colours and smooth surfaces facilitate cleaning – the filters can simply be placed in the dishwasher for cleaning. The powerful LED work light illuminates the cook-top while the powerful diffuser ensures best aspiration while also having a low noise level, and offers good energy efficiency. Smart controls are easy to use and intuitive. The choice of hood can be matched with taps and Tectonite or stainless-steel sinks.

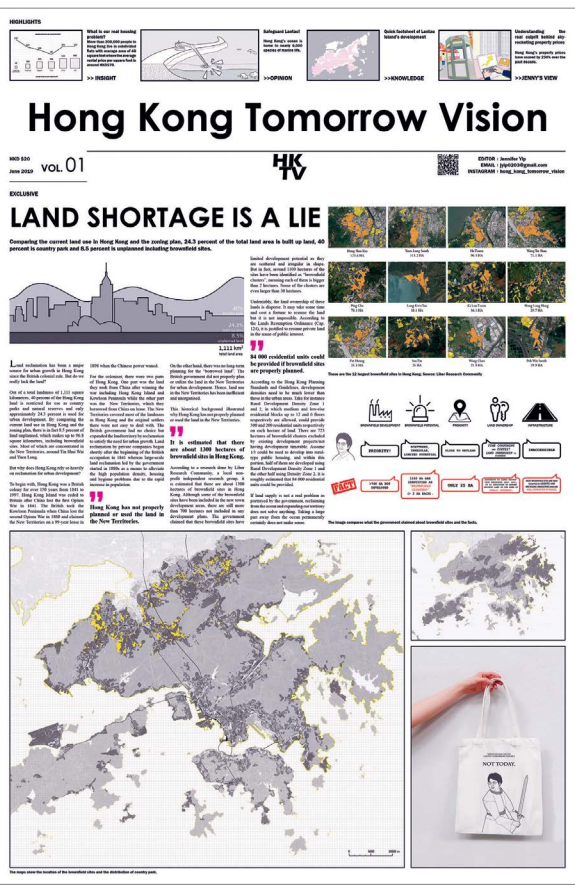
TITANIUM AWARD

Student Architecture

BEST OF CATEGORY

NAME: Jennifer Yip
INSTITUTION: The University of Hong Kong
PROJECT: Hong Kong Tomorrow Vision

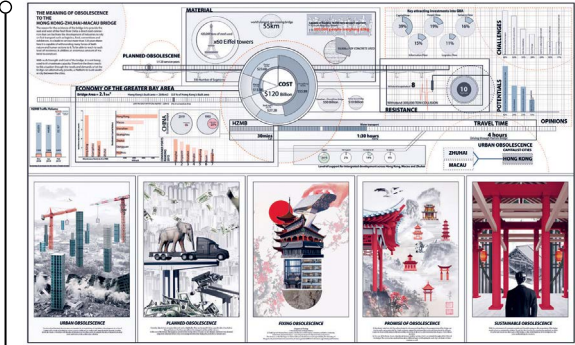
Hong Kong Tomorrow Vision criticises the government’s proposal to build an artificial island in reclaimed waters off the eastern coast of Lantau Island as a solution to the city’s housing shortage. The balance between development and preservation has been an important topic for years. Hong Kong has in the past relied heavily on reclamation for urban growth. However, Yip believes the construction of the artificial island is entirely unjustifiable, saying that there’s already enough land and housing in Hong Kong to meet the demand, noting that reclamation is an irreversible process. The reclaimed land cannot be returned to a natural state, and that part of the ocean is lost forever.



The project proposes reforming Hong Kong, turning the New Territories and Kowloon Peninsula into the Living City, Hong Kong Island into the Monetary City and preserving Lantau Island as the Oasis of Nature. This redistribution would address the city’s housing problems and allow for the co-existence of economic development and preservation.

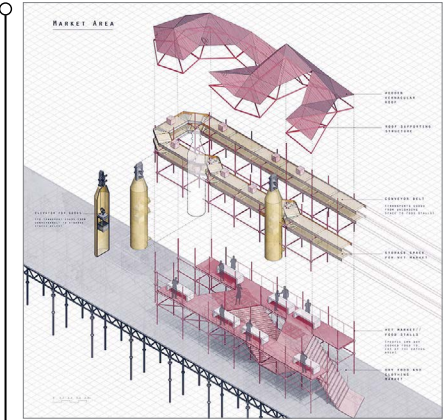
Student Architecture

EXCELLENCE



NAME: Bosco Ho
INSTITUTION: The University of Hong Kong
PROJECT: The City of Capital

Ho states that the Hong Kong-Zhuhai-Macao Bridge is likely to become obsolete; the thesis creates a new civic corridor by using the spaces within the bridge zone that can act as an extension to the city’s production and consumption, allowing for hybrid functions.



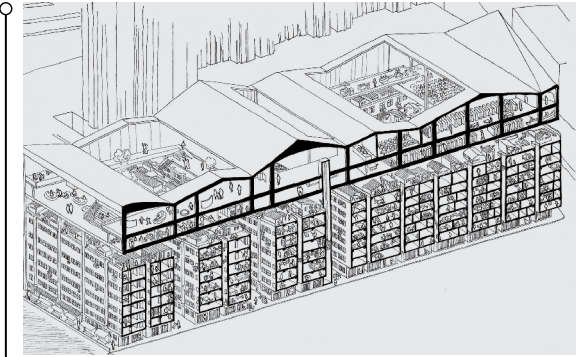
NAME: Ng Hoi-kei
INSTITUTION: The University of Hong Kong
PROJECT: Auto-Market

Auto-Market is an imagined automated machine that operates a market in Bang Krachao in Bangkok. The market rebuilds and reactivates an existing bridge, welcoming visitors and channelling goods from both the water and the land. A conveyor-belt mechanism connecting the different parts forms a loop.



NAME: Mak Chi-hong
INSTITUTION: The University of Hong Kong
PROJECT: The Delivery City

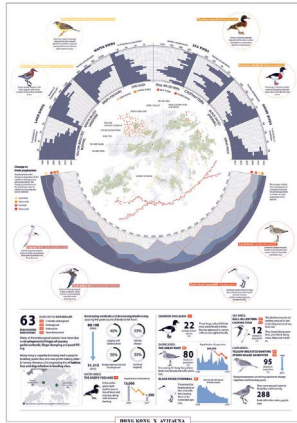
To aid drone delivery of e-commerce goods, architecture should respond by creating a relationship between architecture and airspace. The project suggests a ‘droneport’ and Air Delivery Centre in Kwun Tong to sort, pack and store goods. The design explores a new architectural typology of logistics.



NAME: Jessie Wong
INSTITUTION: The Chinese University of Hong Kong
PROJECT: Hong Kong Archive 2047 – Hawker Practices of Everyday Life

The number of hawkers in Hong Kong has dropped drastically, reducing the vibrancy and diversity of streets. A hawker archive would allow people to recall the facet they bring to the city. The project is allied to one aimed at preserving the *tong lau* tenement communities of Five Streets.

Student Architecture EXCELLENCE



NAME: **Joyce Leung**
INSTITUTION: **The University of Hong Kong**
PROJECT: **Island as a Machine**

Mapping the 'infrastructure' of Waglan Island creates a fictional self-sustaining mechanism, an archive machine, that serves to ensure its survival – an autonomous island. The intention is to expand the limit of the island so it is no longer a forbidden rocky island but an autonomous archive machine.



NAME: **Leung Ka-chi (Group Work with Chong Yuk-lun and Wu King-tim)**
Institution: **The University of Hong Kong**
PROJECT: **Re-printable Clay Formwork**
INSTRUCTOR: **Christian J Lange**

Studies and experiments used robotics to operate 3D clay printing, chosen because clay can be recycled and reused as a formwork. The robotic-printed clay formwork could be used to cast concrete in the void between the clay layers. The clean printed formwork can be softened with water and reused.



NAME: **Tang Wan-ting**
INSTITUTION: **The Chinese University of Hong Kong**
PROJECT: **Hong Kong Archive 2037 – A Paradoxical Wall**

Thirteen former walled villages in the New Territories no longer have their walls that once both protected and isolated. The design project aims to maximise the tranquillity of these area by providing introverted experiences with glimpses of nature.

Student Interior Design BEST OF CATEGORY



NAME: **Tam Kwan-yiu**
INSTITUTION: **The Hong Kong Polytechnic University**
PROJECT: **S/ash Living**

Millennials in Hong Kong have high education levels yet can't afford to rent; in response, a micro community has been designed for millennial professionals, especially 'slash' generation workers. A place for slashers should be highly flexible, self-sufficient and shareable, catering to different needs in terms of time and workspace. Transformable furniture and spaces can be controlled by an app, with users selecting available timeslots creating a multi-functional workplace / residential space that gathers professionals to collaborate, share ideas and enlarge their social circle.

Student Interior Design EXCELLENCE



NAME: **Cho Ka-man**
INSTITUTION: **Hong Kong Design Institute**
PROJECT: **Eco-friendly Shop: Coralogy**

The eco-friendly shop Coralogy advocates sustainable living and the reduction of use of plastics that harm both marine ecosystems and our well-being. The design concept comes from a colourful coral reef and uses recycled materials including a terrazzo-like substance made of recycled plastics and other waste.

Student Interior Design EXCELLENCE



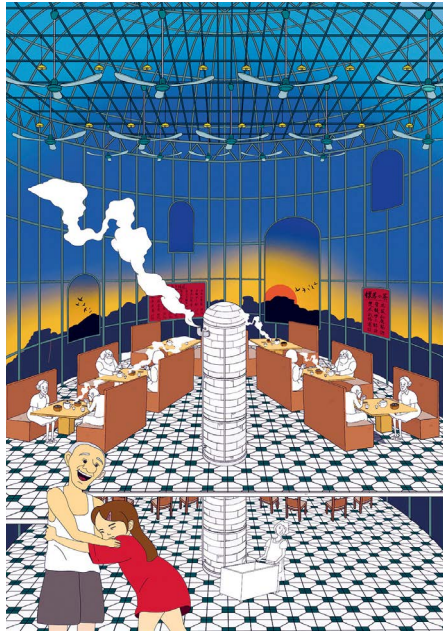
NAME: **Tony Wong**
INSTITUTION: **Hong Kong Design Institute**
PROJECT: **The Frame**

The Frame is a visualisation centre that aims to help users reform, treasure and share their memories by creating short but forceful micro-films. Learning professional ways to record and express themselves can connect communities and, by sharing memories, the hope is that they can be passed to future generations.



NAME: **Wen Zijian**
INSTITUTION: **Hong Kong Design Institute**
PROJECT: **Harmony Child's Center**

This project aims to create a learning support centre to provide a good learning environment for disadvantaged children, letting them explore their potential. Three separate buildings under a highway are connected by a wide corridor that allows children to stay and play. Transparency helps to ensure the children's safety.



NAME: **Wu Yee**
INSTITUTION: **The Hong Kong Polytechnic University**
PROJECT: **Land of Remembrance**

Imagine the spirits of the dead living alongside us and appearing when the sun is gone. They work in an imaginative dim sum house that also functions as a machine to preserve the histories and memories of the community. The story is about a little girl who bursts into this imaginary world.

Student Product Design BEST OF CATEGORY



NAME: **Timothy Lam Yuet-lai, Venus Lai Pui-ying**
INSTITUTION: **The Hong Kong Polytechnic University**
PROJECT: **The Arch**
GROUP OF 5: **An Bangning, Lai Pui-ying, Lam Yuet-lai, Wang Yuanzhi, Chen Qixuan**
TUTORS: **Dr Henri Tung, Prof. Eric Yim**

The Arch is a furniture design that explores the idea of function following form; the movement of a person rolling over was translated into sections of the object. These sections were then joined, creating a long bench with a dynamic outline and changing topography. The size and shape of the arches below change with every section, annotating the movement in different states. Placed together as a complete bench, users can sit on both sides and fit into the PU foam with different postures. They can be separated or used in combination: a sitting object with a side table, a sofa or a stool.

Student Product Design EXCELLENCE



NAME: **Wong Man-wai**
INSTITUTION: **The Hong Kong Polytechnic University**
PROJECT: **Dwarfs**

The product targets 6- to 12-year-old children with ASD (autism spectrum disorder) to improve their social skills. A play process with a social worker educates them about emotional expression and control. Colour, form and sound trigger visual, tactile and auditory sensations, so they have ways to communicate other than simply talking.